

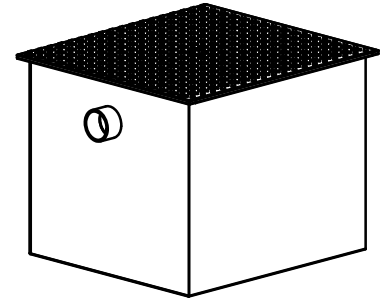
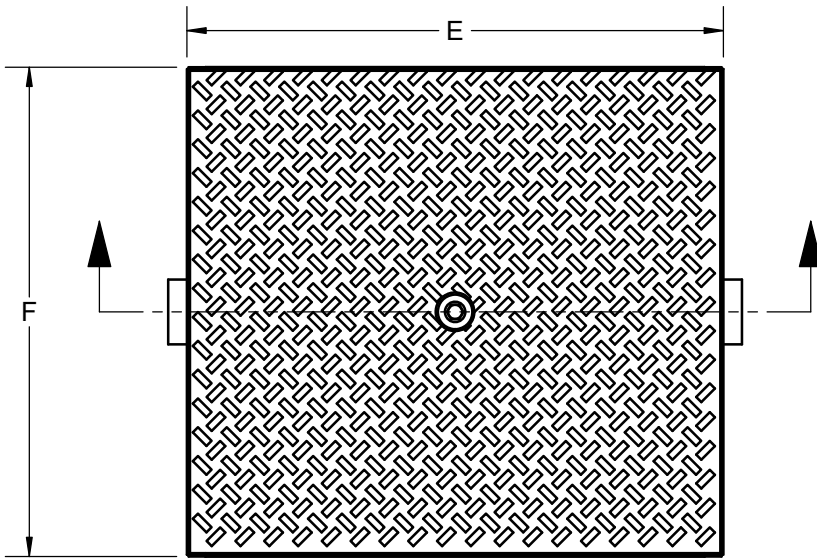
SPECIFICATION:

JOSAM 60100H SERIES ACID-RESISTING EPOXY COATED FABRICATED STEEL GREASE INTERCEPTOR, NO-HUB CONNECTIONS, INTERNAL TRAP, REMOVABLE BAFFLE, GASKETED NON-SKID COVER AND FLOW CONTROL FITTING.

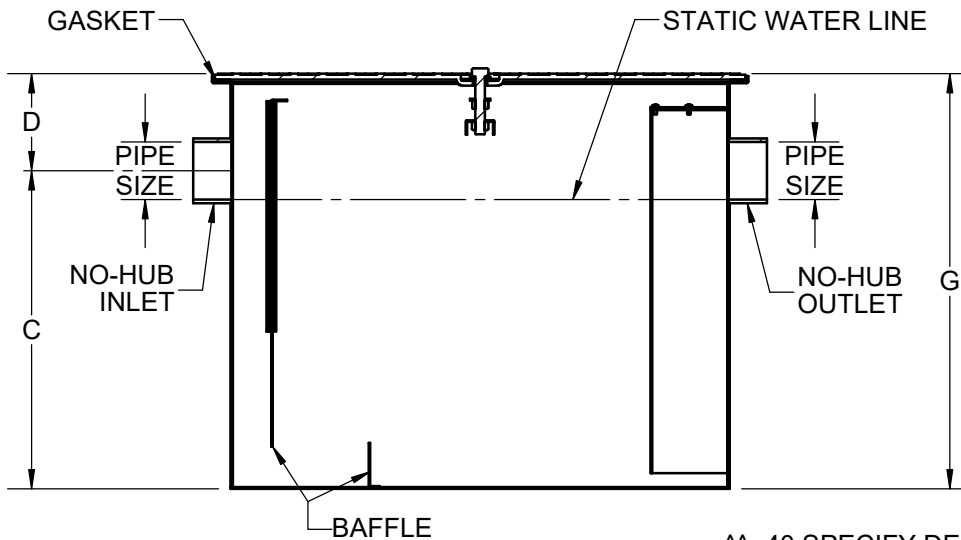
**GREASE INTERCEPTOR
MANUAL TYPE**

SERIES **60100H**

CONFORMS TO PLUMBING AND DRAINAGE INSTITUTE STANDARD PDI-G101 AND ASME A112.43



ACCEPTED FOR USE
CITY OF NEW YORK
DEPARTMENT OF BUILDINGS
MEA 255-06-E VOL. 1



* PRODUCT IS NON-CANCELABLE AND NON-RETURNABLE

NAME: _____

SIGNATURE: _____

DATE: _____

* THESE OPTIONS REQUIRE SIGNATURE - NON CANCELABLE NON RETURNABLE

^^ -40 SPECIFY DEPTH IN 1/8" INCR (1/8 to 7/8) = _____

| | |
|-------|--|
| -AC* | ALUMINUM COVER (N/A WITH -40, -HD) |
| -SS* | STAINLESS STEEL INTERCEPTOR |
| -40* | COVER RECESS FOR FLOOR FINISH^^ |
| -61* | FLANGE AND CLAMP DEVICE |
| -85* | ENZYMATIC PORT IN COVER |
| -EXT* | EXTENSION, 6" STANDARD (SPECIFY EXT. HEIGHT) |
| -ISI | INTEGRATED SOLIDS INTERCEPTOR |
| -RT | RECESSED TYPE |
| -ET | ENCLOSED TYPE |
| -HD* | HEAVY-DUTY COVER |

| | TYPE | FLOW (GPM) | CAP. (LBS.) | PIPE SIZE | C | D | E | F | G |
|--|--------|------------|-------------|-----------|--------|-------|--------|--------|--------|
| | 60102H | 7 | 14 | 2 | 8-1/4 | 3-3/8 | 14-7/8 | 13 | 11-5/8 |
| | 60103H | 10 | 20 | 2 | 8-1/2 | 3-3/8 | 16-5/8 | 14-1/2 | 11-7/8 |
| | 60104H | 15 | 30 | 2 | 9-1/2 | 3-3/8 | 20-3/8 | 17 | 12-7/8 |
| | 60105H | 20 | 40 | 3 | 12 | 4-7/8 | 20-7/8 | 19 | 16-7/8 |
| | 60106H | 25 | 50 | 3 | 13 | 4-7/8 | 23-3/8 | 21-1/2 | 17-7/8 |
| | 60107H | 35 | 70 | 3 | 14-1/2 | 4-7/8 | 26-1/8 | 23 | 19-3/8 |
| | 60108H | 50 | 100 | 3 | 16-1/2 | 4-7/8 | 28 | 25-1/2 | 21-3/8 |
| | 60109H | 75 | 150 | 3 | 21 | 6 | 41 | 31 | 27 |
| | 60110H | 100 | 200 | 4 | 23 | 8 | 47 | 35 | 31 |

Δ SEPARATE SUBMITTAL FOR THIS OPTION AVAILABLE

DATE OF LAST CHANGE: 02/21/24 BLK

DIMENSIONS ARE SUBJECT TO MANUFACTURERS TOLERANCES AND CHANGE WITHOUT NOTICE. WE CAN ASSUME NO RESPONSIBILITY FOR USE OF SUPERSEDED OR VOID DATA.

JOSAM
MICHIGAN CITY, INDIANA

NOTES

WARNING: Cancer and Reproductive Harm - www.P65Warnings.ca.gov