

SPECIFICATION:

JOSAM SERIES 47300-LB FABRICATED STAINLESS STEEL (TYPE 304, 1.5 mm), 3" WIDE, V-SHAPED BOTTOM, AVAILABLE WITH OR WITHOUT SLOPE (1% STD.), WITH ANCHOR TABS AND LEVELING FEET, WITH 2" BOTTOM CONNECTION AND PERFORATED GRATE. RUN LENGTHS LONGER THAN 13' PROVIDED WITH FLANGES, GASKETS, AND HARDWARE.

SS MINI CHANNEL
3" WIDE - LESS OUTLET BOX

(XY)

SERIES **47300-LB**

STD. GRATE: SLOT WIDTH = .3 [8] HEEL-RESISTANT
 FREE AREA = 7.8 IN²/FT

SPECIFICATIONS:

LINEAR RUN

TOTAL RUN LENGTH (L) = _____

START HT. (H1) (MIN. 3" [75]) = _____

HT. AT OUTLET BOX (H2) = _____

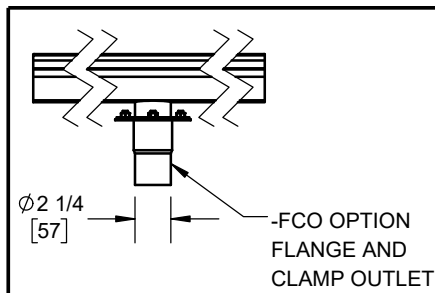
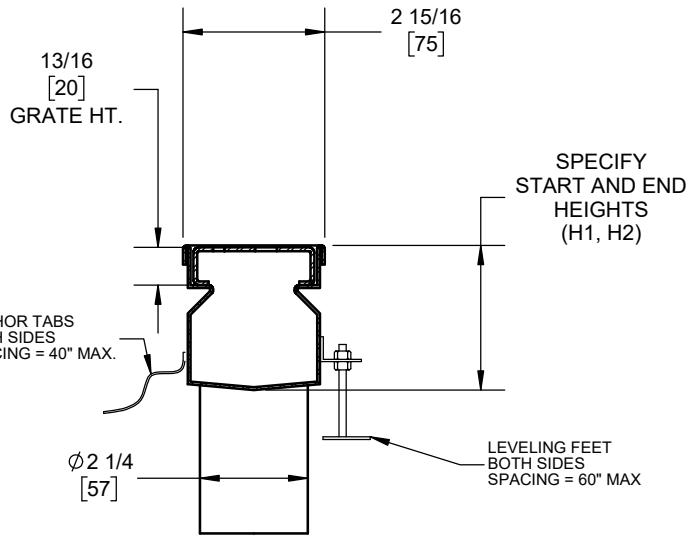
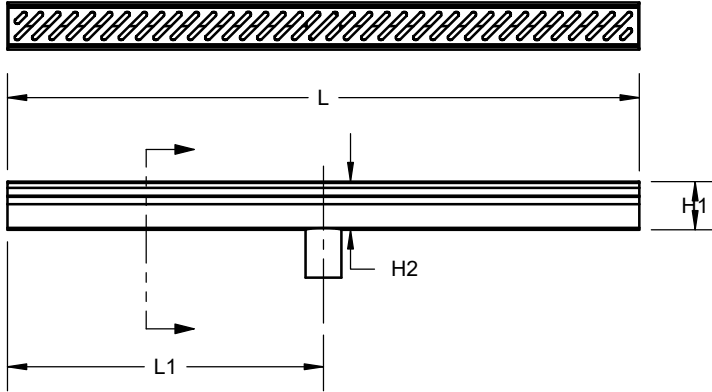
OR STD 1% SLOPE

OUTLET AT END OF RUN

OUTLET MID-RUN (SPEC. LENGTH L1) = _____

NON-LINEAR RUN

PROVIDE SKETCH WITH CRITICAL LENGTH AND HEIGHT DIMENSIONS AND OUTLET LOCATION(S).



AUTHORIZED PROJECT SIGNATURE AND DATE:

NAME:

TITLE:

SIGNATURE:

DATE:

NOTE: ALL SS MINI CHANNELS ARE CUSTOM FABRICATED. ORDERS ARE NON-CANCELLABLE AND NON-RETURNABLE.

OPTIONS:

-FB	FLAT STRAINER
-VP	SECURED GRATE
-316	TYPE 316L MATERIAL
-BW	BUTT-WELD OUTLET (SPEC. 10, 40, 80)
-FCO	FLANGE AND CLAMP OUTLET

X = GRATE TYPE

0	NO GRATE
1	PERFORATED SHEET GRATE
2	ANTI-SLIP MESH GRATE
3	PERIMETER SLOT GRATE
4	LADDER GRATE

Y = OUTLET SIZE

X	2"
---	----

WARNING: Cancer and Reproductive Harm - www.P65Warnings.ca.gov

DATE OF LAST CHANGE: 01/23/25

DIMENSIONS ARE SUBJECT TO MANUFACTURERS TOLERANCES AND CHANGE WITHOUT NOTICE. WE CAN ASSUME NO RESPONSIBILITY FOR USE OF SUPERSEDED OR VOID DATA.

JOSAM
 MICHIGAN CITY, INDIANA

NOTES