

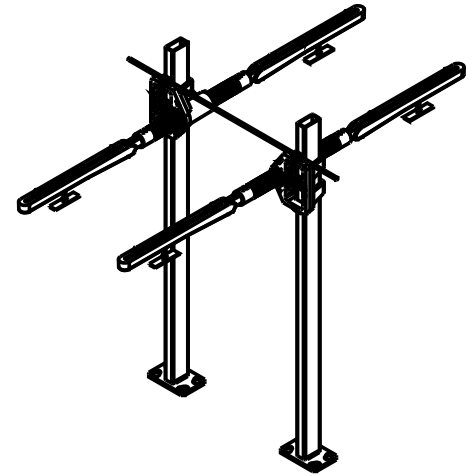
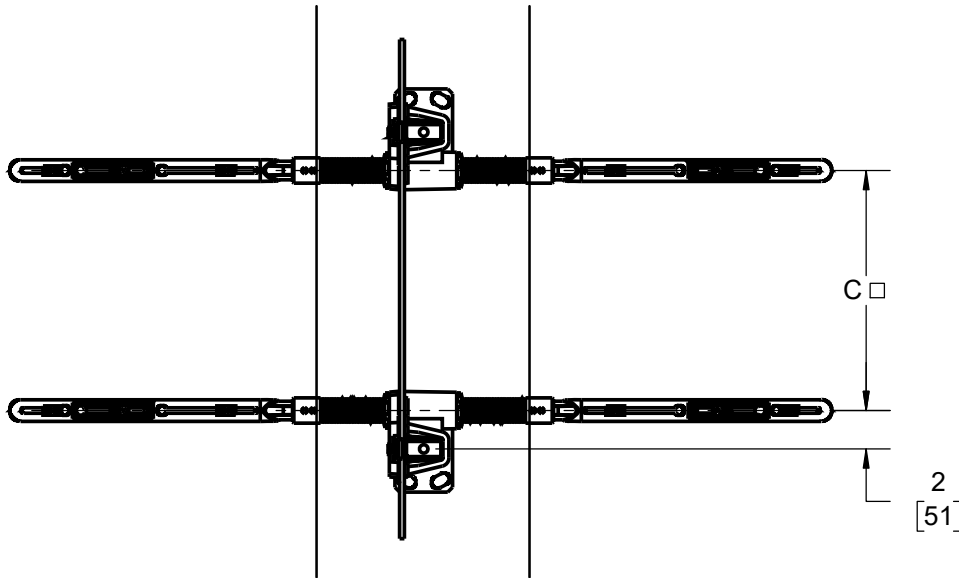
**SPECIFICATION:**

JOSAM 17100-BB SERIES FLOOR-MOUNTED, BACK-TO-BACK LAVATORY CARRIER WITH CONCEALED ARMS, LEVELING AND SECURING SCREWS, STRUCTURAL UPRIGHTS AND WELDED FEET.

**LAVATORY CARRIER**

**FLOOR-MOUNT  
CONCEALED ARM**

SERIES **17100-BB**



MANUFACTURER \_\_\_\_\_

NUMBER \_\_\_\_\_

SIZE \_\_\_\_\_

NAME \_\_\_\_\_

DIMENSIONS

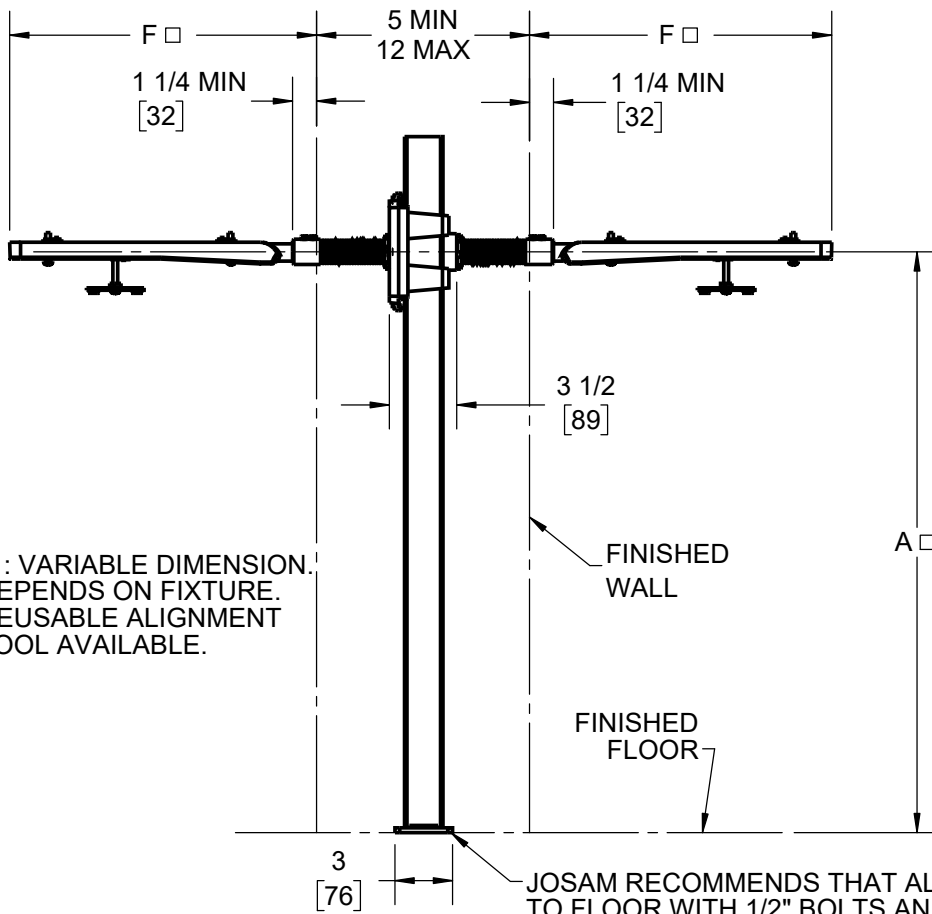
A \_\_\_\_\_

C \_\_\_\_\_

F \_\_\_\_\_

RIM HEIGHT \_\_\_\_\_

BASED ON "A" DIM SHOWN



□: VARIABLE DIMENSION. DEPENDS ON FIXTURE. REUSABLE ALIGNMENT TOOL AVAILABLE.

X	-BB	BACK TO BACK CARRIER
	-10	EXTENSION SLEEVES LONGER THAN STANDARD (SPECIFY WALL THICKNESS)
	-60	VALVE PLATE FOR ATTACHING TO UPRIGHT
	-67	CONCEALED ARM CARRIER FOR WHEEL CHAIR LAVATORY
	-75	2" CHROME PLATED ESCUTCHEONS
	-76	4" CHROME PLATED ESCUTCHEONS
	-77	6" CHROME PLATED ESCUTCHEONS

	ARM
	-201
	-202
	-203

WARNING: Cancer and Reproductive Harm - www.P65Warnings.ca.gov

DATE OF LAST CHANGE: 2/15/24 JTJ

DIMENSIONS ARE SUBJECT TO MANUFACTURERS TOLERANCES AND CHANGE WITHOUT NOTICE. WE CAN ASSUME NO RESPONSIBILITY FOR USE OF SUPERSEDED OR VOID DATA.

**JOSAM**

MICHIGAN CITY, INDIANA

NOTES