

**SPECIFICATION:**

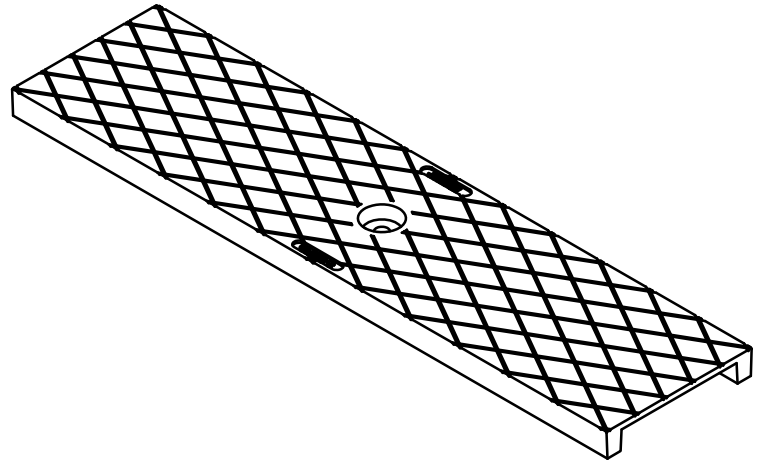
JOSAM 100-CIS-C-DC EPOXY-COATED, SOLID CAST IRON COVER WITH CENTER HOLE FOR LOCKING BAR SECUREMENT. DESIGNED TO FIT PRO-PLUS™ 100 SIZE CHANNEL. COVER HAS NO FREE AREA FOR DRAINAGE.

**TRENCH DRAIN COVER**

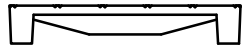
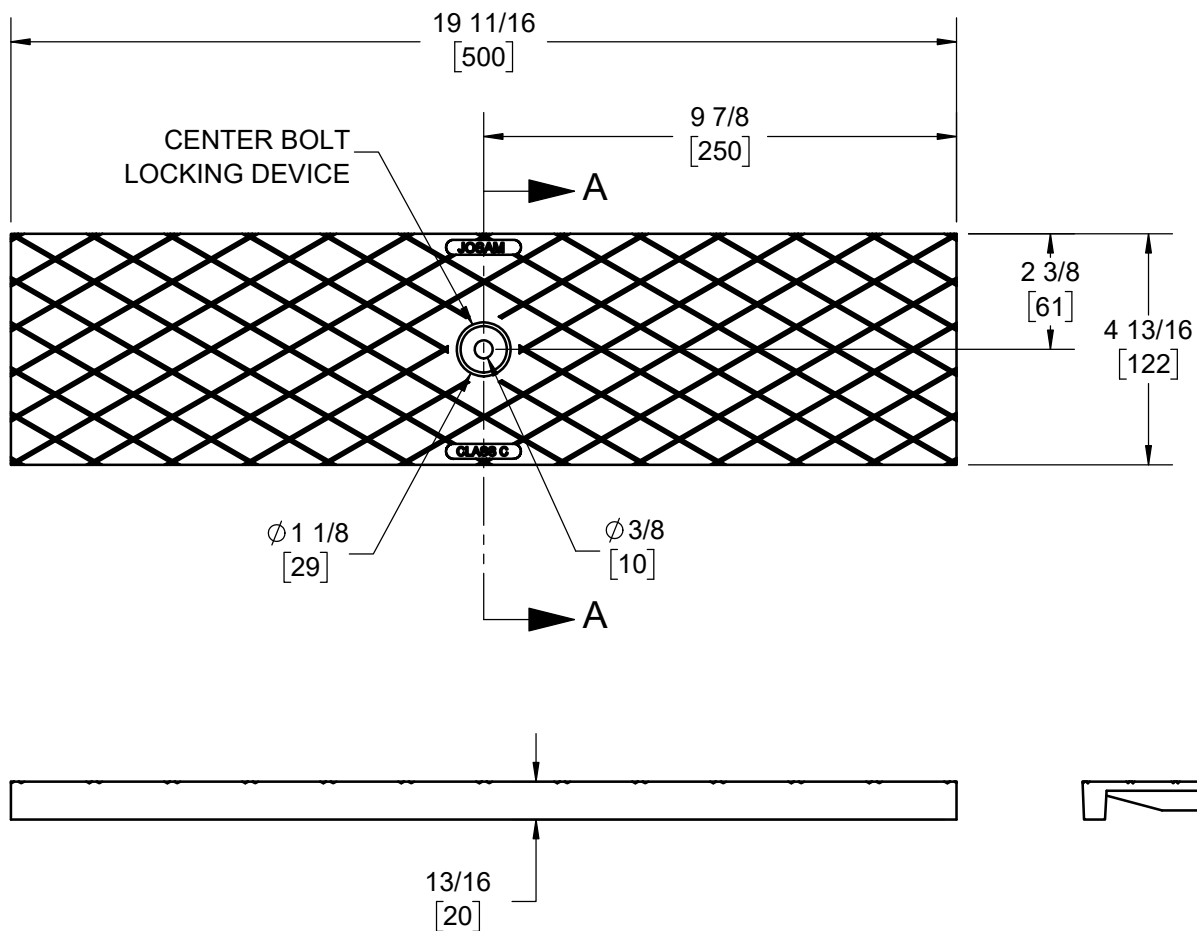
PRO-PLUS™ 100

SERIES **100-CIS-C-DC**

LOAD RATINGS EN/DIN: C H20: Y  
MADE IN USA



SECTION A-A  
SCALE 1 : 4



LOCKING BAR (ORDER SEPERATELY)	360141
--------------------------------	--------

WARNING: Cancer and Reproductive Harm - www.P65Warnings.ca.gov

DATE OF LAST CHANGE: 5/19/23 JTJ  
DIMENSIONS ARE SUBJECT TO MANUFACTURERS TOLERANCES AND CHANGE WITHOUT NOTICE. WE CAN ASSUME NO RESPONSIBILITY FOR USE OF SUPERSEDED OR VOID DATA.

**JOSAM**  
MICHIGAN CITY, INDIANA

NOTES