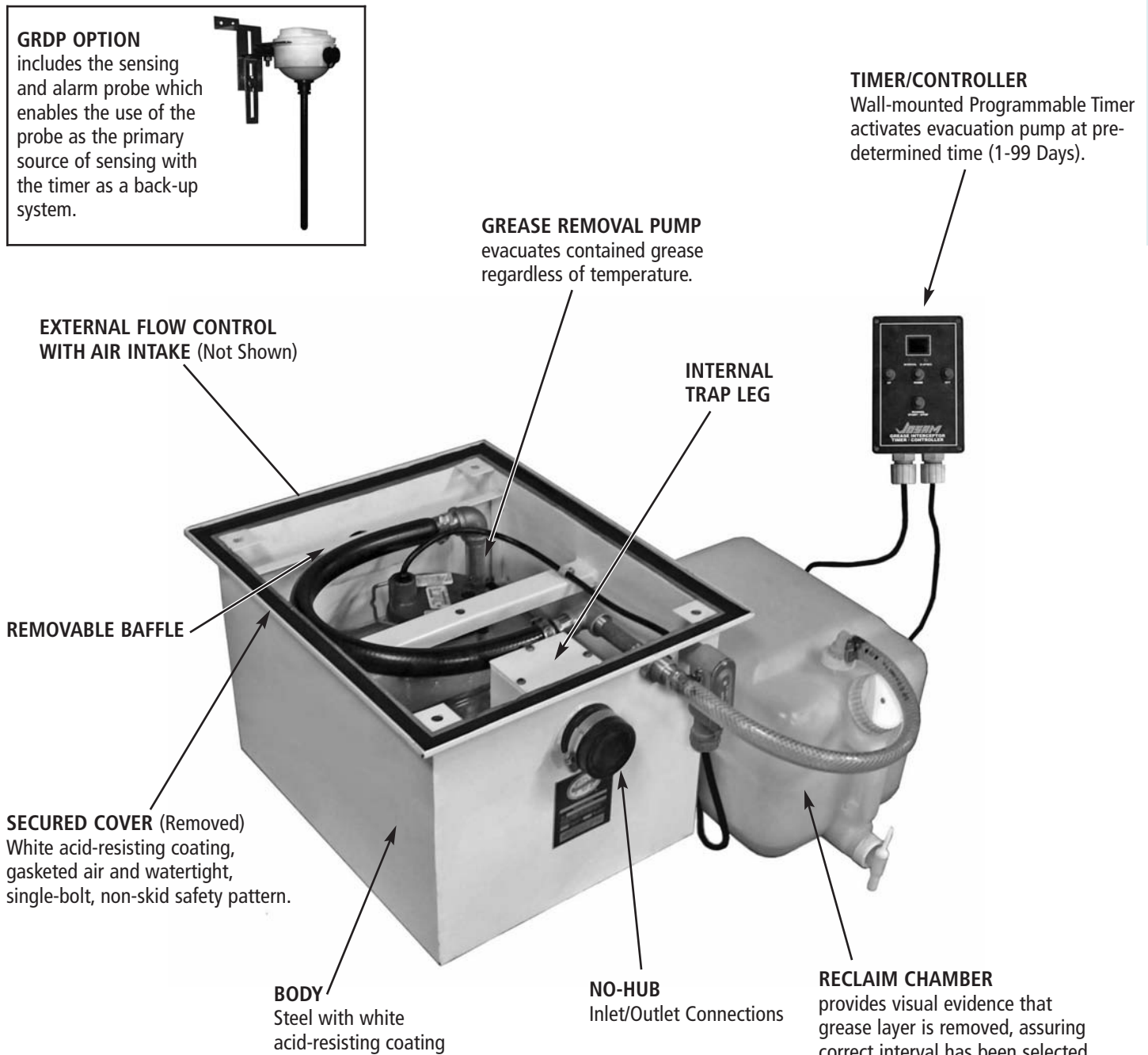


GREASE INTERCEPTORS

Grease Interceptor Features

A grease interceptor is a plumbing device installed in the sanitary drainage system to intercept fats, oils and grease (FOG) from the waste water discharge. It works by slowing the flow of water into the interceptor, which allows the FOG time to separate from the waste water. The FOG is contained in the body of the interceptor allowing the FOG-free water to pass downstream by exiting the interceptor via a trap leg. Hydro-mechanical grease interceptors range in size from small 7 GPM units to large 500 GPM units. Units with installed grease removal devices are self-cleaning. For maximum grease efficiency JOSAM provides an external flow control with every interceptor which must be used as directed.

60100H-GRD TIMER-CONTROLLED GREASE REMOVAL PUMP



INTERCEPTORS

Selection Checklist

This checklist of interceptors is provided as a guide to selection of the proper type interceptor to control specific waste materials. First determine the waste material to be controlled, then follow the check marks for the types of interceptors recommended.

TYPE OF WASTE MATERIAL	TYPES OF INTERCEPTORS																										
	GREASE INTERCEPTORS												OIL SEPARATORS					SOLIDS INTERCEPTORS									
	AUTOMATIC		SEMI-AUTOMATIC				MANUAL						AUTOMATIC														
	60100H-GRD	60300A	60100-SA	60110-SA	60100-SA-RT	60100-SA-ET	60100H	60115A	60117A	60100H-EXT	60100H-RT	60100H-ET	60210A	60210A-EXT	60500B	60500B-EXT	60500-EST	60610A	60610A-EXT	60610-EST	60810	61000	61030	61040	61070	61080	61800
Barium															✓	✓	✓	✓	✓	✓			✓	✓			
Benzine																											
Cheese	✓	✓	✓	✓	✓	✓	✓	✓	✓	✓	✓	✓	✓	✓													
Cutting Oils															✓	✓	✓	✓	✓	✓							
Elemental Mercury*																					✓						
Fats	✓	✓	✓	✓	✓	✓	✓	✓	✓	✓	✓	✓	✓	✓													
Gasoline															✓	✓	✓	✓	✓	✓							
Gauze																					✓	✓	✓				
Glass Grindings																							✓				
Gravel																					✓	✓			✓	✓	
Grease	✓	✓	✓	✓	✓	✓	✓	✓	✓	✓	✓	✓	✓	✓													
Hair																					✓	✓			✓	✓	
Jewels																					✓	✓	✓				
Kerosene															✓	✓	✓	✓	✓								
Lint																					✓	✓			✓	✓	✓
Lubricating Oil															✓	✓	✓	✓	✓	✓							
Naphtha															✓	✓	✓	✓	✓	✓							
Oil															✓	✓	✓	✓	✓	✓							
Oil Sludge																					✓						
Paraffin	✓	✓					✓	✓	✓	✓	✓	✓	✓	✓													
Plaster																							✓	✓			
Precious Metals																					✓	✓	✓				
Quench Oil															✓	✓	✓	✓	✓	✓							
Rouge																								✓			
Rubber Grindings																							✓				
Sand																					✓	✓			✓	✓	
Sediment																					✓	✓			✓	✓	
Wax	✓	✓					✓	✓	✓	✓	✓	✓	✓	✓													
*Cast Iron Interceptor Only																											

*Cast Iron Interceptor Only

How to Order

Select Type Number from Dimension Table and use suffix numbers to indicate options.

EXAMPLE: Series No. 60100H Type No. 6010

60106H -EXT -ISI

Type No. _____

Option, Integral Extension _____

Option, Integrated Solids Interceptor _____

HOW TO ORDER INTERCEPTORS WITH EXTENDED TOPS

When ordering extensions for Grease and Oil Interceptors (-EXT), specify dimension from the pipe centerline to finished floor.

GREASE INTERCEPTORS

Selection Table

TYPE NO.	RATING IN G.P.M.	INLET & OUTLET SIZE (INCHES)	TYPE NO.	RATING IN G.P.M.	INLET & OUTLET SIZE (INCHES)
AUTOMATIC TYPE			MANUAL CLEANING TYPE		
60306A	25	3	60102H, -EXT, -RT, -ET	7	2
60307A	35	3	60103H, -EXT, -RT, -ET	10	2
60308A	50	3	60104H, -EXT, -RT, -ET	15	2
60309A	75	4	60105H, -EXT, -RT, -ET	20	3
60310A	100	4	60106H, -EXT, -RT, -ET	25	3
60311A	150	4	60107H, -EXT, -RT, -ET	35	3
60312A	200	6	60108H, -EXT, -RT, -ET	50	3
60313A	250	6	60109H, -EXT, -RT, -ET	75	3
60314A	350	6	60110H, -EXT, -RT, -ET	100	4
60315A	500	6	MANUAL CLEANING LOW TYPE		
SEMI-AUTOMATIC TYPE			60115A	20	2
60102-SA, -RT, -ET	7	2	60117A	35	3
60103-SA, -RT, -ET	10	2	MANUAL CLEANING HIGH VOLUME TYPE		
60104-SA, -RT, -ET	15	2	60213A, -EXT	150	4
60105-SA, -RT, -ET	20	3	60214A, -EXT	200	5
60106-SA, -RT, -ET	25	3	60215A, -EXT	250	5
60107-SA, -RT, -ET	35	3	60216A, -EXT	350	6
60108-SA, -RT, -ET	50	3	60217A, -EXT	500	6
SEMI-AUTOMATIC LOW TYPE					
60115-SA	35	3			
GREASE MONITORING DEVICE					
EGOLD-1000					
CEGOLD-2000					
-SAP					

INTERCEPTORS

Sizing

Consult PDI-G101 or ASME A112.14.3 Standards or your local codes.

MANUAL CLEANING

60100H
On-Floor Type



Page 211

60100H-EXT
Extended Top



Page 212

60100H-ET
Enclosed Top



Page 212

60100H-RT
Recessed Type



Page 213

MANUAL CLEANING

60115A/60117A
Low-Boy



Page 216

60210A
High Volume



Page 217

60210A-EXT
High Volume, Extended Top



Page 218

SEMI-AUTOMATIC CLEANING

60100-SA
On-Floor Type



Page 214

60100-SA-ET
Enclosed Type



Page 215

60100-SA-RT
Recessed Type



Page 215

60115-SA
Low Boy



Page 216

AUTOMATIC

60300A
GI-2000A Fully Electronic
SS Interceptor



Page 219

ELECTRONIC GREASE/OIL LEVEL DETECTORS

60100H-GRD
Grease Removal Device



Page 211

EGOLD-1000
Monitoring Device for
Interceptors Inside Building



Page 220

CEGOLD-2000
Monitoring Device for
Interceptors Outside Building



Page 220

SAP
Sensing & Alarm Probe



Page 217

OIL SEPARATORS

60500B

Gravity-Type Draw-Off



Page 225

60500B-EXT

Extended Top, Draw-Off Type



Page 225

60500-EST

with External Storage Tank



Page 226

OIL SEPARATORS

60610A

High Volume, Draw-Off Type



Page 227

60610A-EXT

High Volume, Extended Top, Draw-Off Type



Page 227

60610-EST

High Volume with External Storage Tank



Page 228 (EST NOT SHOWN)

SOLIDS INTERCEPTORS

61000

Barber Shop Type, Bottom Access



Page 229

61030

Jewelry Shop Type, Top Access



Page 229

61040A

18" x 18" Top Access



Page 230

61070

10-1/2" Top

Top Access



Pages 230, 231

61080

16-1/2" Top

OIL/SEDIMENT

60810



Page 229

LINT INTERCEPTOR

61800

Galvanized Steel Bucket

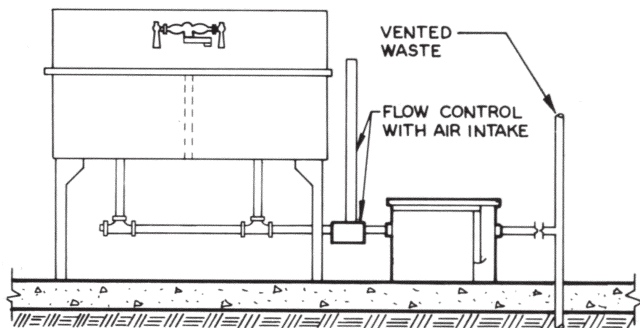


Page 232

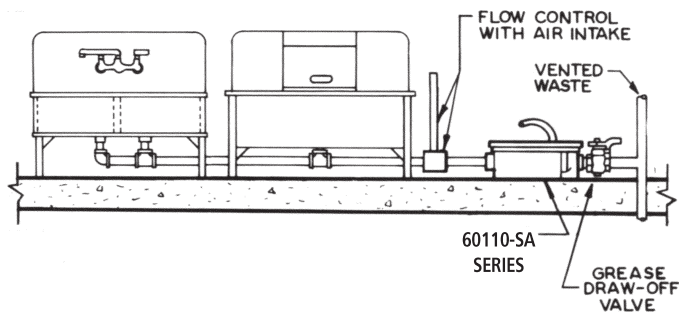
GREASE INTERCEPTORS

Typical Installations

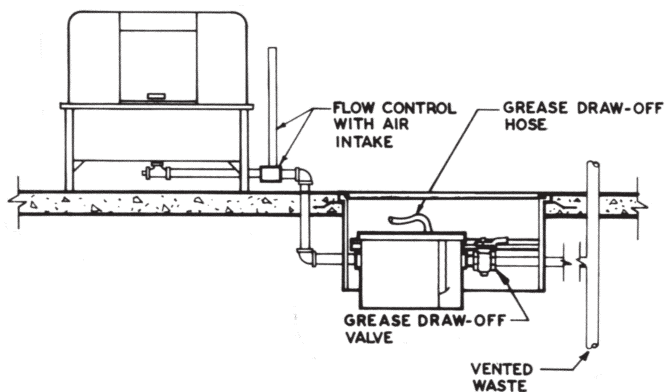
The typical illustrations shown below are suggested ways of installing various types of JOSAM Interceptors. All installations are subject to government and local code requirements.



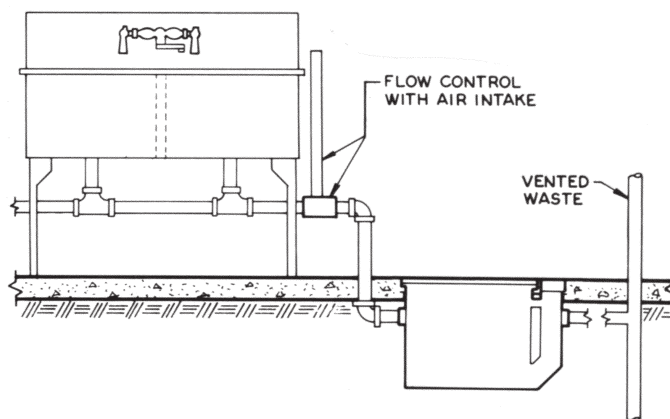
60100H Series Interceptor on floor, servicing a sink.



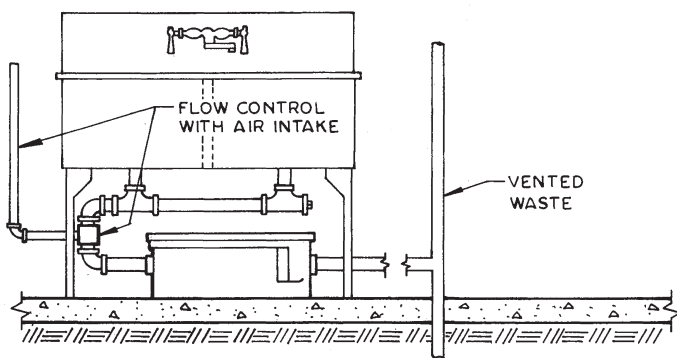
60110-SA Series Semi-Automatic shallow Interceptor installed on floor, servicing a double compartment sink and dishwasher.



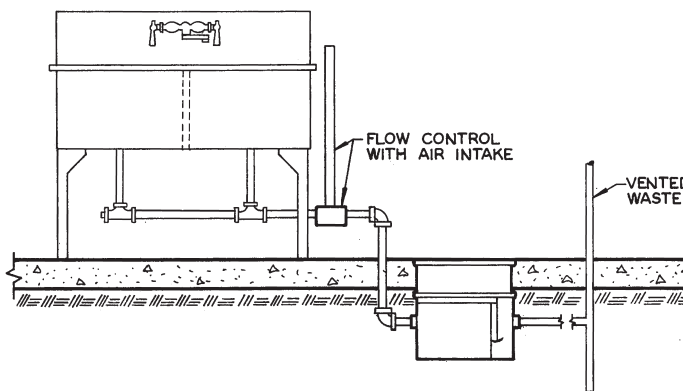
60100-SA-RT Series Semi-Automatic Interceptor recessed flush with floor, servicing a dishwasher.



60210A-EXT Series Interceptor recessed flush with floor, servicing a sink and an additional fixture.



60115A Series Interceptor installed on floor under sink.
(Recommended only if there is adequate head room for cover removal and service.)



60100H-EXT Series Interceptor recessed with deep roughing extended flush with floor.

NOTE: Install air intake from flow control to outside of building and terminate with elbow, turned down or intersect a local vent or vent stack without trap if permitted by code. Top of air intake from flow control should not be lower than rim of fixture.



60100H SERIES

MANUAL CLEANING, ON-FLOOR TYPE

APPLICATION

For use in restaurant and institutional kitchens and all types of food handling and processing areas where waste water contains fats, oil and grease (FOG). Adequate space and head room for removal of cover must be available for manual cleaning.

SPECIFICATION

JOSAM 60100H Series epoxy coated fabricated steel Grease Interceptor, no-hub connections, internal trap, removable diffuser baffle, gasketed non-skid cover, flow control fitting and PDI Seal of Approval. Conforms to Plumbing & Drainage Institute Standard PDI-G101.



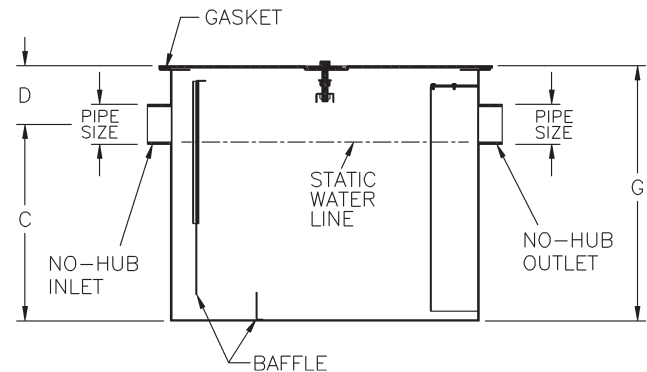
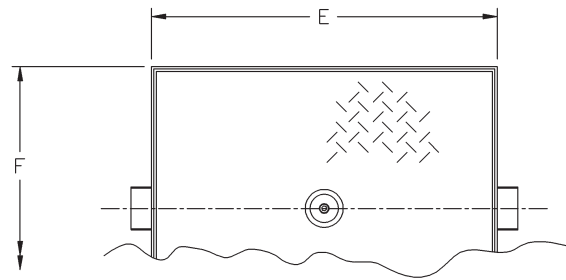
Conforms to Plumbing and Drainage Institute Standard PDI-G101.

Available Options

-40	Cover Recess for Floor Finish	-HD	Heavy-Duty Cover
-61	Flange and Clamp Device	-SS	Stainless Steel Interceptor
* -ISI	Integrated Solids Interceptor	▼ -GRD*	Grease Removal Device, 60104H-60110H
▼ -EXT	Extension, 6" Standard. (Specify Extension Height)	† -GRDP	Grease Recovery Device with Probe
▼ -RT	Recessed Type	-SAP	Sensing and Alarm Probe
▼ -ET	Enclosed Type		

* -ISI and -GRD cannot be furnished together. † 60100H-GRDP meets ANSI A112.14.4

TYPE NO.	FLOW RATE GPM	GREASE CAP LBS.	PIPE SIZE	ROUGH-IN CENTERS		LGTH. E	WIDTH F	HGT. G	LBS.
				C	D				
60102H	7	14	2	8-1/4	3-3/8	14-7/8	13	11-5/8	35
60103H	10	20	2	8-1/2	3-3/8	16-5/8	14-1/2	11-7/8	45
60104H	15	30	2	9-1/2	3-3/8	20-3/8	17	12-7/8	60
60105H	20	40	3	12	4-7/8	20-7/8	19	16-7/8	70
60106H	25	50	3	13	4-7/8	23-3/8	21-1/2	17-7/8	90
60107H	35	70	3	14-1/2	4-7/8	26-1/8	23	19-3/8	110
60108H	50	100	3	16-1/2	4-7/8	27-7/8	25-1/2	21-3/8	135
60109H	75	150	3	21	6	41	31	27	220
60110H	100	200	4	23	8	47	35	31	325



INTERCEPTORS

60100H-GRD SERIES

with Grease Removal Device

APPLICATION

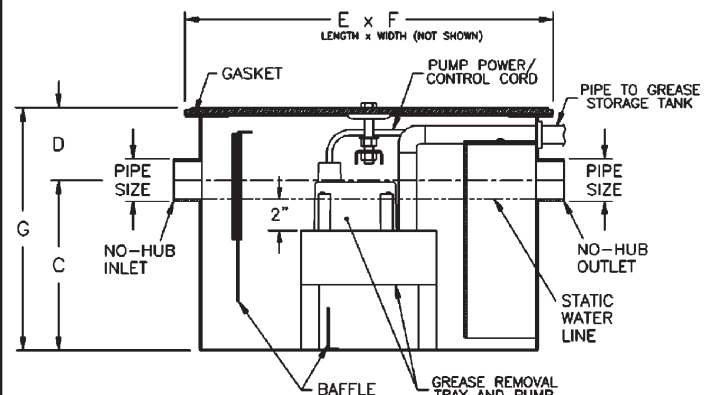
For use in restaurant and institutional kitchens and all types of food handling and processing areas where waste water contains fats, oil and grease (FOG). The Grease Removal Device (GRD), with programmable timer, controls the internal pump to remove grease on schedule.

SPECIFICATION

JOSAM 60100H-GRD Series epoxy coated fabricated steel Grease Interceptor, no-hub connections, internal trap, removable baffle, gasketed non-skid cover, flow control fitting and PDI Seal of Approval. Programmable timer controls internal pump for removal of grease at predetermined intervals.

OPTION N/A:

-ISI



TYPE NO.	FLOW RATE GPM	GREASE CAP LBS.	PIPE SIZE	ROUGH-IN CENTERS		LGTH. E	WIDTH F	HGT. G	LBS.
				C	D				
60104H-GRD	15	30	2	9-1/2	3-3/8	20-3/8	17	12-7/8	90
60105H-GRD	20	40	3	12	4-7/8	20-7/8	19	16-7/8	100
60106H-GRD	25	50	3	13	4-7/8	23-3/8	21-1/2	17-7/8	120
60107H-GRD	35	70	3	14-1/2	4-7/8	26-1/8	23	19-3/8	140
60108H-GRD	50	100	3	16-1/2	4-7/8	27-7/8	25-1/2	21-3/8	165
60109H-GRD	75	150	3	21	6	41	31	27	250
60110H-GRD	100	200	4	23	8	47	35	31	355

60100H-EXT SERIES

with Extension

APPLICATION

For use in restaurant and institutional kitchens and all types of food handling and processing areas where waste water contains fats, oil and grease (FOG). Extended top with fixed extension for installations requiring additional roughing depth from the cover of the interceptor to the inlet and outlet.

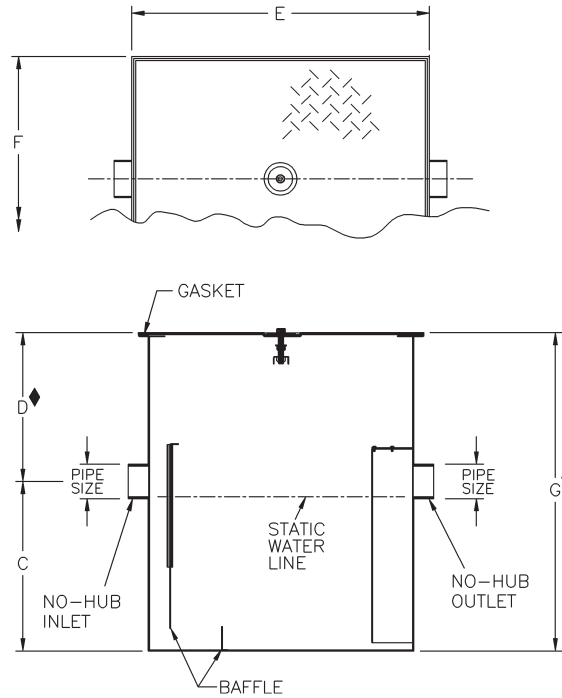
SPECIFICATION

JOSAM 60100H-EXT Series epoxy coated fabricated steel Grease Interceptor, deep roughing, integral extension, flush-with-floor type, no-hub connections, internal trap, removable diffuser baffle, gasketed non-skid cover, flow control fitting and PDI Seal of Approval.



Conforms to Plumbing and Drainage Institute Standard PDI-G101.

TYPE NO.	FLOW RATE GPM	GREASE CAP LBS.	PIPE SIZE	ROUGH-IN CENTERS		LGTH. E	WIDTH F	HGT. G	LBS.
				C	D				
60102H-EXT	7	14	2	8-1/4	9-3/8	14-7/8	13	17-5/8	35
60103H-EXT	10	20	2	8-1/2	9-3/8	16-5/8	14-1/2	17-7/8	45
60104H-EXT	15	30	2	9-1/2	9-3/8	20-3/8	17	18-7/8	60
60105H-EXT	20	40	3	12	10-7/8	20-7/8	19	22-7/8	70
60106H-EXT	25	50	3	13	10-7/8	23-3/8	21-1/2	23-7/8	90
60107H-EXT	35	70	3	14-1/2	10-7/8	26-1/8	23	25-3/8	110
60108H-EXT	50	100	3	16-1/2	10-7/8	27-7/8	25-1/2	27-3/8	135
60109H-EXT	75	150	3	21	12	41	31	33	220
60110H-EXT	100	200	4	23	14	47	35	37	325



◆ DIMENSIONS BASED ON STD. 6" EXTENSION.

60100H-ET SERIES

Enclosed Type

APPLICATION

For use in restaurant and institutional kitchens and all types of food handling and processing areas where waste water contains fats, oil and grease (FOG). Steel enclosure cabinet for installation flush with the floor, completely encased, where adjustment of interceptor elevation is necessary for connection to a deep drain line.

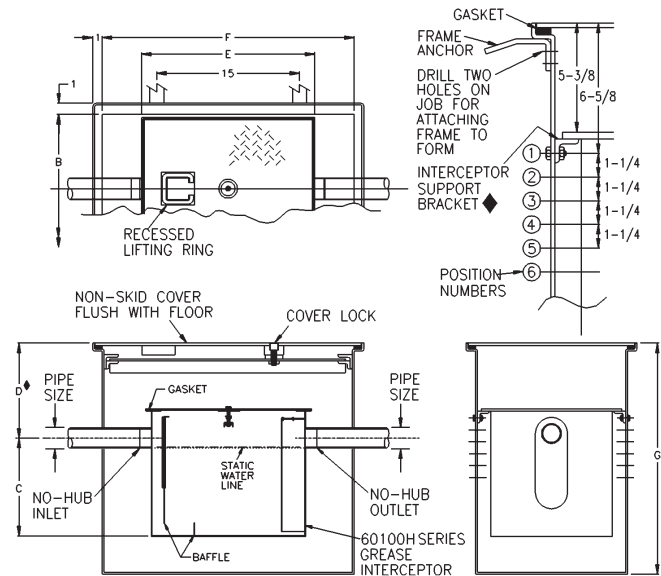
SPECIFICATION

JOSAM 60100H-ET Series epoxy coated fabricated steel Grease Interceptor, deep roughing, flush-with-floor type, no-hub connections, internal trap, removable diffuser baffle, gasketed non-skid cover, flow control fitting, PDI Seal of Approval and steel enclosure cabinet with non-skid cover and adjustable interceptor carrier brackets.



Conforms to Plumbing and Drainage Institute Standard PDI-G101.

TYPE NO.	FLOW RATE GPM	GREASE CAP LBS.	PIPE SIZE	WIDTH B	ROUGH-IN CENTERS		INTER. LGTH. E	ENCL. LGTH. F	HGT. G	LBS.
					C	D				
60102H-ET	7	14	2	15	8-1/4	8-3/4	14-7/8	23	25-3/4	143
60103H-ET	10	20	2	16-1/2	8-1/2	8-3/4	16-5/8	24-3/4	26	185
60104H-ET	15	30	2	19	9-1/2	8-3/4	20-3/8	28-1/2	27	232
60105H-ET	20	40	3	21	12	10-1/4	20-7/8	29	31	274
60106H-ET	25	50	3	23-1/2	13	10-1/4	23-3/8	31-1/2	32	356
60107H-ET	35	70	3	25	14-1/2	10-1/4	26-1/8	34-1/4	33-1/2	378
60108H-ET	50	100	3	27-1/2	16-1/2	10-1/4	27-7/8	36	35-1/2	435
60109H-ET	75	150	3	33	21	11-3/8	41	49-1/8	41-1/8	780
60110H-ET	100	200	4	37	23	13-3/8	47	55-1/8	45-1/8	1075



◆ BASED ON INTERCEPTOR IN POSITION #1, ADD 1-1/4" WHEN LOWERING INTERCEPTOR TO SUCCEEDING POSITIONS.

INTERCEPTOR SUPPORT BRACKET ADJUSTABLE FOR VARYING DEPTHS OF FLOOR CONSTRUCTION.



60100H-RT SERIES

Recessed Type

APPLICATION

For use in restaurant and institutional kitchens and all types of food handling and processing areas where waste water contains fats, oil and grease (FOG). Steel frame and cover for installation flush with the floor where adjustment of interceptor elevation is necessary for connection to a deep drain line.

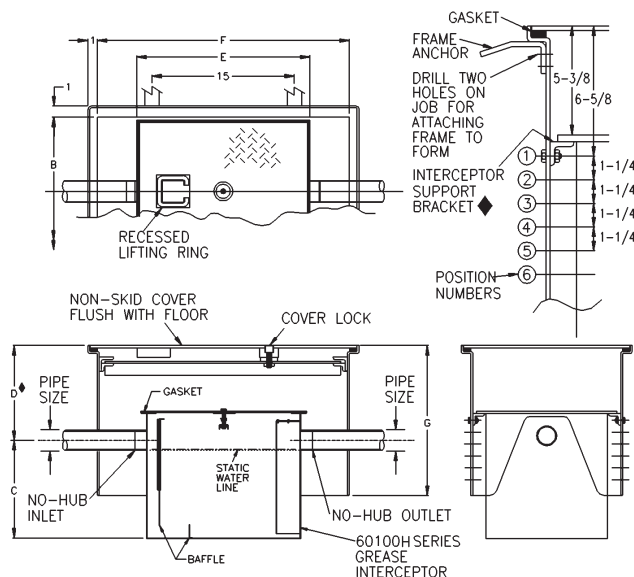
SPECIFICATION

JOSAM 60100H-RT Series epoxy coated fabricated steel Grease Interceptor, deep roughing, recessed, flush-with-floor type, no-hub connections, internal trap, removable diffuser baffle, gasketed non-skid cover, flow control fitting, PDI Seal of Approval and steel frame with non-skid cover and adjustable interceptor carrier brackets.



Conforms to Plumbing and Drainage Institute Standard PDI-G101.

TYPE NO.	FLOW RATE GPM	GREASE CAP LBS.	PIPE SIZE	WIDTH B	ROUGH-IN CENTERS		INTER. LGTH. E	ENCL. LGTH. F	HGT. G	LBS.
					C	D♦				
60102H-RT	7	14	2	15	8-1/4	8-3/4	14-7/8	19	14-3/4	102
60103H-RT	10	20	2	16-3/8	8-1/2	8-3/4	16-5/8	21	14-3/4	120
60104H-RT	15	30	2	18-1/2	9-1/2	8-3/4	20-3/8	24	14-3/4	151
60105H-RT	20	40	3	20-1/4	12	10-1/4	20-7/8	26	14-3/4	175
60106H-RT	25	50	3	22-1/2	13	10-1/4	23-3/8	29	14-7/8	197
60107H-RT	35	70	3	24	14-1/2	10-1/4	26-1/8	31	14-7/8	225
60108H-RT	50	100	3	26-5/8	16-1/2	10-1/4	27-7/8	33	14-7/8	258
60109H-RT	75	150	3	33	21	11-3/8	41	49-1/8	15-3/4	455
60110H-RT	100	200	4	37	23	13-3/8	47	55-1/8	15-3/4	625



♦ BASED ON INTERCEPTOR IN POSITION #1, ADD 1-1/4" WHEN LOWERING INTERCEPTOR TO SUCCEEDING POSITIONS.

INTERCEPTOR SUPPORT BRACKET ADJUSTABLE FOR VARYING DEPTHS OF FLOOR CONSTRUCTION.

60100-SA SERIESSEMI-AUTOMATIC

APPLICATION

For use in restaurant and institutional kitchens and all types of food handling and processing areas where waste water contains fats, oil and grease (FOG). Semi-automatic draw-off allows for easy odor and mess free grease removal without opening the cover.

SPECIFICATION

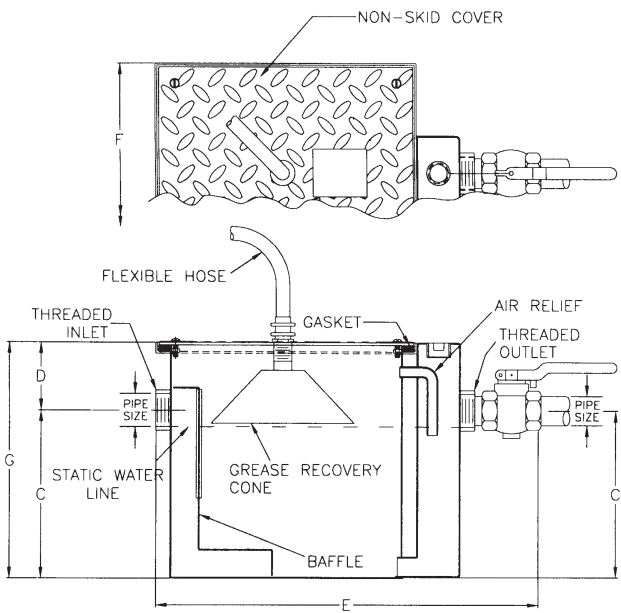
JOSAM 60100-SA Series epoxy coated fabricated steel Grease Interceptor with threaded connections, internal air relief, visible double wall trap, removable baffle, gasketed non-skid cover, grease recovery cone, flexible hose, grease draw-off valve and flow control fitting.

Available Options

- 62 4" Inlet and Outlet Available on Std. 3" Sizes
- 65 Hub Inlet, Spigot Outlet, 2"
- 66 Hub Inlet, Spigot Outlet, 3"
- 67 Hub Inlet, Spigot Outlet, 4"

- ▼ -ET Enclosed Type
- ▼ -RT Recessed Type

- 3" sizes normally furnished with 4" x 3" reducing bushings.



NOTE: HGT. OF 13" REQUIRED FROM TOP OF INTERCEPTOR TO BOTTOM OF FIXTURE.

TYPE NO.	FLOW RATE GPM	GREASE CAP LBS.	PIPE SIZE	ROUGH-IN CENTERS		LGTH. E	WIDTH F	HGT. G	LBS.
				C	D				
60102-SA	7	14	2	7-3/8	2-1/4	20-7/16	9-15/16	9-5/8	31
60103-SA	10	20	2	8-3/8	2-7/8	22-1/16	11-9/16	11-1/4	40
60104-SA	15	30	2	9-3/8	4	24-3/16	13-3/16	13-3/8	47
60105-SA	20	40	2	11-1/2	4-5/8	26-15/16	14-13/16	16-1/8	88
60106-SA	25	50	3•	13	4-3/8	32	16-7/8	17-3/8	123
60107-SA	35	70	3•	14-1/2	4	33-5/8	17-7/8	18-1/2	127
60108-SA	50	100	3•	15-1/2	4-7/8	37-1/4	19-3/4	20-3/8	197

60100-SA-ET SERIES

Enclosed Type

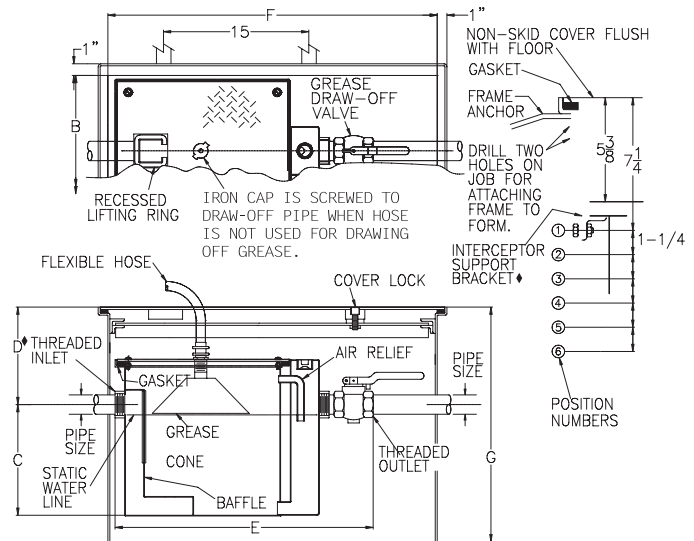
APPLICATION

For use in restaurant and institutional kitchens and all types of food handling and processing areas where waste water contains fats, oil and grease (FOG). Semi-automatic draw-off allows for easy odor and mess free grease removal without opening the cover. Steel enclosure cabinet for installation flush with the floor, completely encased, where adjustment of interceptor elevation is necessary for connection to a deep drain line.

SPECIFICATION

JOSAM 60100-SA-ET Series epoxy coated fabricated steel semi-automatic Grease Interceptor with threaded connections, internal air relief, visible double wall trap, removable baffle, gasketed cover, grease recovery cone, flexible hose and grease draw-off valve, flow control fitting and steel enclosure cabinet with non-skid cover and adjustable interceptor carrier brackets.

TYPE NO.	FLOW RATE GPM	GREASE CAP LBS.	PIPE SIZE	WIDTH B	ROUGH-IN CENTERS		E	LGTH. F	HGT. G	LBS.
					C	D				
60102-SA-ET	7	14	2	11	7-3/8	7-5/8	20-7/16	27-1/2	24-5/8	136
60103-SA-ET	10	20	2	12-5/8	8-3/8	8-1/4	22-1/16	29	25-7/8	177
60104-SA-ET	15	30	2	14-1/4	9-3/8	9-3/8	24-3/16	31-1/4	27-1/8	216
60105-SA-ET	20	40	2	16	11-1/2	10	26-15/16	34	29-1/8	289
60106-SA-ET	25	50	3	17-1/2	13	9-3/4	32	38	31-1/2	360
60107-SA-ET	35	70	3	18-1/2	14-1/2	9-3/8	33-5/8	39-1/2	32-5/8	389
60108-SA-ET	50	100	3	20-1/4	15-1/2	10-1/4	37-1/4	43-1/8	34-5/8	491



NOTE: HGT. OF 13" REQUIRED FROM TOP OF INTERCEPTOR TO BOTTOM OF FIXTURE.

◆ BASED ON INTERCEPTOR IN POSITION #1, ADD 1-1/4" WHEN LOWERING INTERCEPTOR TO SUCCEEDING POSITIONS. INTERCEPTOR SUPPORT BRACKET ADJUSTABLE FOR VARYING DEPTHS OF FLOOR CONSTRUCTION.

60100-SA-RT SERIES

Recessed Type

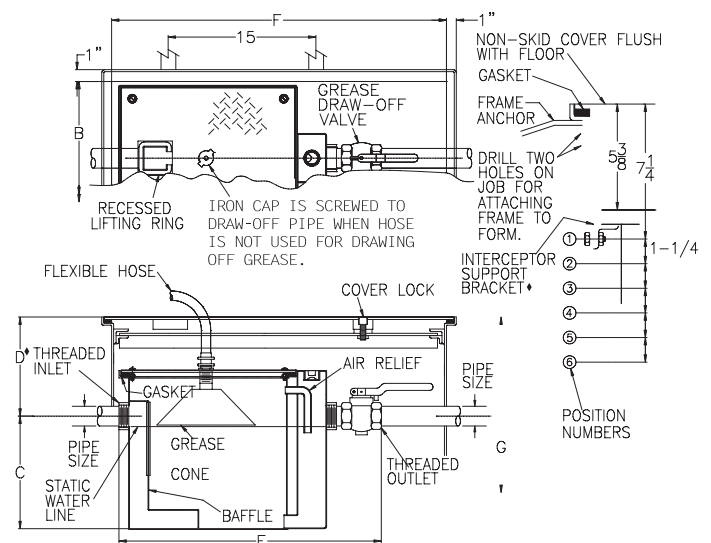
APPLICATION

For use in restaurant and institutional kitchens and all types of food handling and processing areas where waste water contains fats, oil and grease (FOG). Semi-automatic draw-off allows for easy odor and mess free grease removal without opening the cover. Steel frame and cover for installation flush with the floor where adjustment of interceptor elevation is necessary for connection to deep drain line.

SPECIFICATION

JOSAM 60100-SA-RT Series epoxy coated fabricated steel semi-automatic Grease Interceptor with acid-resisting coating, deep roughing flush-with-floor type, threaded connections, flat bottom, internal air relief, visible double wall trap, removable baffle, gasketed non-skid cover, grease recovery cone, flexible hose and grease draw-off valve, flow control fitting and steel frame with non-skid cover and adjustable interceptor carrier brackets.

TYPE NO.	FLOW RATE GPM	GREASE CAP LBS.	PIPE SIZE	WIDTH B	ROUGH-IN CENTERS		E	LGTH. F	HGT. G	LBS.
					C	D				
60102-SA-RT	7	14	2	11	7-3/8	7-5/8	20-7/16	27-1/2	14-3/4	127
60103-SA-RT	10	20	2	12-5/8	8-3/8	8-1/4	22-1/16	29	14-3/4	144
60104-SA-RT	15	30	2	14-1/4	9-3/8	9-3/8	24-3/16	31-1/4	14-3/4	159
60105-SA-RT	20	40	2	16	11-1/2	10	26-15/16	34	14-3/4	208
60106-SA-RT	25	50	3	17-1/2	13	9-3/4	32	38	14-3/4	255
60107-SA-RT	35	70	3	18-1/2	14-1/2	9-3/8	33-5/8	39-1/2	14-7/8	260
60108-SA-RT	50	100	3	20-1/4	15-1/2	10-1/4	37-1/4	43-1/8	14-7/8	338



NOTE: HGT. OF 13" REQUIRED FROM TOP OF INTERCEPTOR TO BOTTOM OF FIXTURE.

◆ BASED ON INTERCEPTOR IN POSITION #1, ADD 1-1/4" WHEN LOWERING INTERCEPTOR TO SUCCEEDING POSITIONS. INTERCEPTOR SUPPORT BRACKET ADJUSTABLE FOR VARYING DEPTHS OF FLOOR CONSTRUCTION.

60115A/60117A SERIES

MANUAL CLEANING, LOW TYPE

APPLICATION

For use in restaurant and institutional kitchens and all types of food handling and processing areas where waste water contains fats, oil and grease (FOG). Adequate space and head room for removal of cover must be available for manual cleaning. Low profile interceptor designed to fit on the floor under equipment in a limited space.

SPECIFICATION

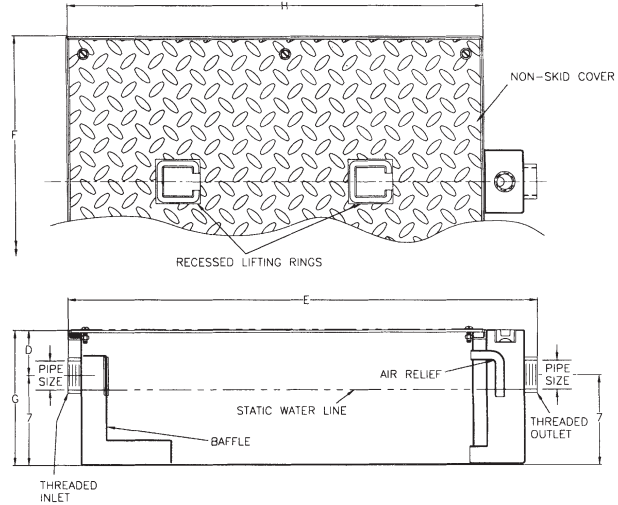
JOSAM 60115A/60117A Series epoxy coated fabricated steel Grease Interceptor, shallow on-floor type, threaded connections, internal air relief, visible double wall trap, removable baffle, gasketed non-skid cover and flow control fitting.

Available Options

- 65 Hub Inlet, Spigot Outlet, 2"
- 66 Hub Inlet, Spigot Outlet, 3"
- -68 3" Inlet and Outlet Available on Standard 2" Size

- 2" sizes normally furnished with 3" x 2" reducing bushings.

TYPE NO.	FLOW RATE GPM	GREASE CAP. LBS.	PIPE SIZE	D	E	F	G	H	LBS.
60115A	20	40	2•	3-1/2	36-3/8	22-5/8	10-1/2	31-5/8	109
60117A	35	70	3	4-1/2	47-3/4	28-5/8	11-1/2	42-5/8	165



60115-SA SERIES

SEMI-AUTOMATIC, LOW TYPE

APPLICATION

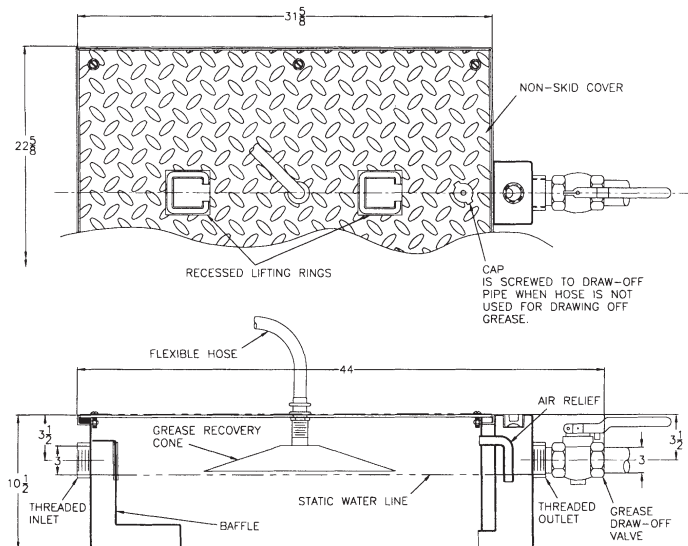
For use in restaurant and institutional kitchens and all types of food handling and processing areas where waste water contains fats, oil and grease (FOG). Semi-automatic draw-off allows for easy odor and mess free grease removal without opening the cover. Low profile interceptor designed to fit on the floor under equipment in a limited space.

SPECIFICATION

JOSAM 60115-SA Series epoxy coated fabricated steel Grease Interceptor, shallow on-floor type, threaded connections, internal air relief, visible double wall trap, removable baffle, gasketed non-skid cover, grease recovery cone, flexible hose, grease draw-off valve and flow control fitting.

Available Options

- 65 Hub Inlet, Spigot Outlet, 2"
- 66 Hub Inlet, Spigot Outlet, 3"



TYPE NO.	FLOW RATE GPM	GREASE CAPACITY LBS.	LBS.
60115-SA	35	70	124

NOTE: HGT. OF 8-1/2" REQUIRED FROM TOP OF INTERCEPTOR TO BOTTOM OF FIXTURE.

60210A SERIES

MANUAL CLEANING TYPE

APPLICATION

For use in restaurant and institutional kitchens and all types of food handling and processing areas where waste water contains fats, oil and grease (FOG).

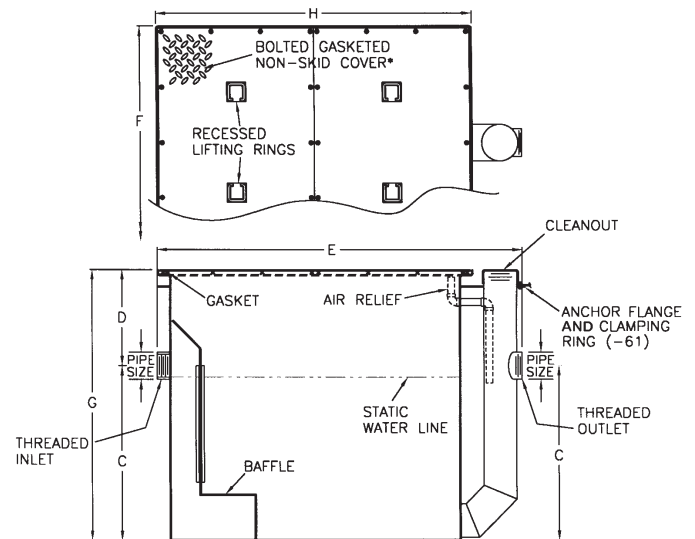
SPECIFICATION

JOSAM 60210A Series epoxy coated fabricated steel Grease Interceptor, high volume, threaded connections, internal air relief, visible double wall trap, removable baffle, gasketed non-skid cover and flow control fitting.

Available Options

- ▼ -EXT Extension, 6" Standard. (Specify Extension Height)
- 60 Anchor Flange
- 61 Flange and Clamp Device
- ▼ -ISI Integrated Solids Interceptor
- HD Heavy-Duty Cover
- SAP Sensing and Alarm Probe

TYPE NO.	FLOW RATE GPM	GREASE CAP LBS.	PIPE SIZE	ROUGH-IN CENTERS		LGTH. E	WIDTH F	HGT. G	COVER H	LBS.
				C	D					
60213A	150	300	4	27	8	60	39	35	53	725
60214A	200	400	5	31-1/2	10	67	42	41-1/2	58	1150
60215A	250	500	5	35-1/2	10	72	46	45-1/2	63	1425
60216A	350	700	6	39-1/2	12	80	52	51-1/2	71	1800
60217A	500	1000	6	43-1/2	12	91	59	55-1/2	82	2300



* 60213A FURNISHED WITH ONE-PIECE COVER.

60210A-SAP SERIES

with Wireless Sensing and Alarm Probe

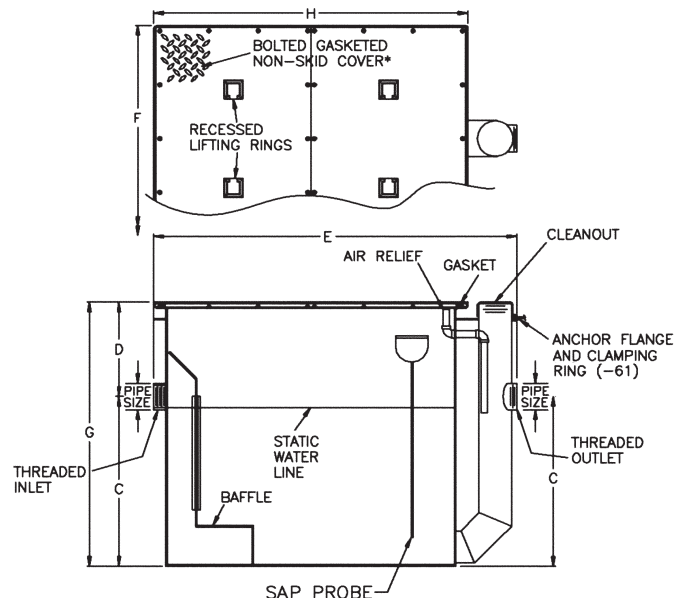
APPLICATION

For use in restaurant and institutional kitchens and all types of food handling and processing areas where waste water contains fats, oil and grease (FOG). Will monitor and alarm facility personnel when interceptor cleaning is required.

SPECIFICATION

JOSAM 60210A-SAP Series epoxy coated fabricated steel Grease Interceptor, high volume, threaded connections, internal air relief, visible double wall trap, removable baffle, gasketed non-skid cover, flow control fitting and factory installed wireless Sensing and Alarm Probe (SAP) assembly. Wall-mounted controller is battery powered by a UL listed 9VDC transformer and has L.E.D. indicators with audible alarm and permanent memory. Probe assembly is mounted to a bracket for precise placement ensuring accurate and reliable readings and transmits to controller via a wireless signal.

TYPE NO.	FLOW RATE GPM	GREASE CAP LBS.	PIPE SIZE	ROUGH-IN CENTERS		LGTH. E	WIDTH F	HGT. G	COVER H	LBS.
				C	D					
60213A-SAP	150	300	4	27	8	60	39	35	53	727
60214A-SAP	200	400	5	31-1/2	10	67	42	41-1/2	58	1152
60215A-SAP	250	500	5	35-1/2	10	72	46	45-1/2	63	1427
60216A-SAP	350	700	6	39-1/2	12	80	52	51-1/2	71	1802
60217A-SAP	500	1000	6	43-1/2	12	91	59	55-1/2	82	2302



* 60213A-SAP FURNISHED WITH ONE-PIECE COVER.

60210A-EXT SERIES

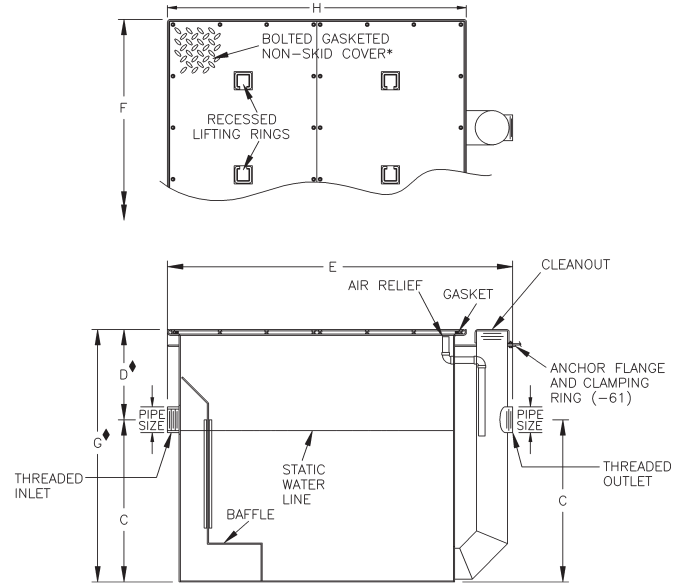
with Extension

APPLICATION

For use in large restaurant and institutional kitchens and all types of food handling and processing areas where waste water contains large amounts of fats, oil and grease (FOG). Extended top with fixed extension for installations requiring additional roughing depth from the cover of the interceptor to the inlet and outlet.

SPECIFICATION

JOSAM 60210A-EXT Series epoxy coated fabricated steel Grease Interceptor, high volume, deep roughing, integral extension, threaded connections, internal air relief, visible double wall trap, removable baffle, gasketed non-skid cover and flow control fitting.



◆ DIMENSIONS BASED ON STD. 6" EXTENSION

* 60213A-EXT FURNISHED WITH ONE-PIECE COVER.

TYPE NO.	FLOW RATE GPM	GREASE CAP LBS.	PIPE SIZE	ROUGH-IN CENTERS		LGTH. E	WIDTH F	HGT. G	COVER H	LBS.
				C	D					
60213A-EXT	150	300	4	27	14	60	39	41	53	935
60214A-EXT	200	400	5	31-1/2	16	67	42	47-1/2	58	1150
60215A-EXT	250	500	5	35-1/2	16	72	46	51-1/2	63	1425
60216A-EXT	350	700	6	39-1/2	18	80	52	57-1/2	71	1800
60217A-EXT	500	1000	6	43-1/2	18	91	59	61-1/2	82	2300

60210A-ISI SERIES

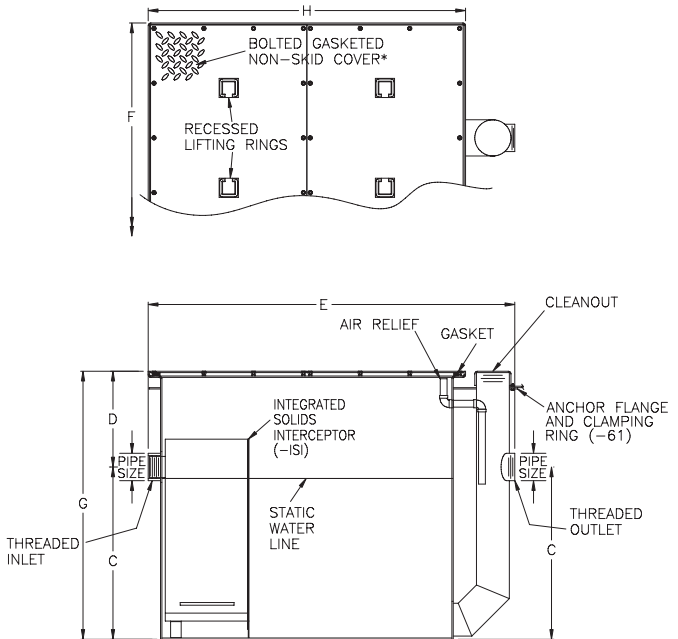
with Integrated Solids Interceptor

APPLICATION

For use in large restaurant and institutional kitchens and all types of food handling and processing areas where waste water contains large amounts of fats, oil and grease (FOG).

SPECIFICATION

JOSAM 60210A-ISI Series epoxy coated fabricated steel Grease Interceptor, high volume, threaded connections, internal air relief, visible double wall trap, integrated solids interceptor, gasketed non-skid cover and flow control fitting.



* 60213A-ISI FURNISHED WITH ONE-PIECE COVER.

TYPE NO.	FLOW RATE GPM	GREASE CAP LBS.	PIPE SIZE	ROUGH-IN CENTERS		LGTH. E	WIDTH F	HGT. G	COVER H	LBS.
				C	D					
60213A-ISI	150	300	4	27	8	60	39	35	53	975
60214A-ISI	200	400	5	31-1/2	10	67	42	41-1/2	58	1200
60215A-ISI	250	500	5	35-1/2	10	72	46	45-1/2	63	1475
60216A-ISI	350	700	6	39-1/2	12	80	52	51-1/2	71	1850
60217A-ISI	500	1000	6	43-1/2	12	91	59	55-1/2	82	2400

60300A SERIES

GI 2000A AUTOMATIC GREASE RECOVERY DEVICE

APPLICATION

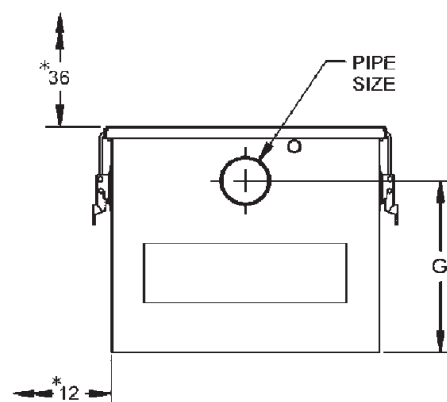
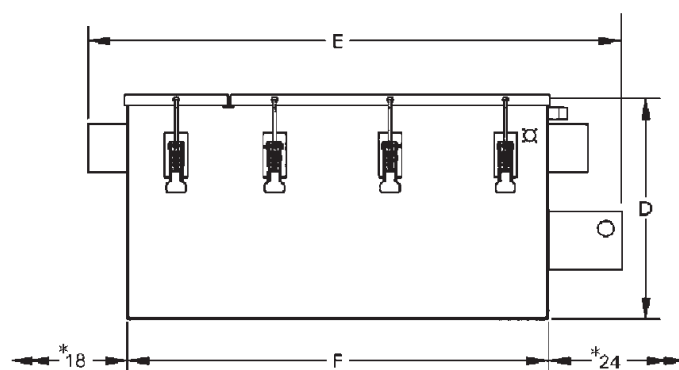
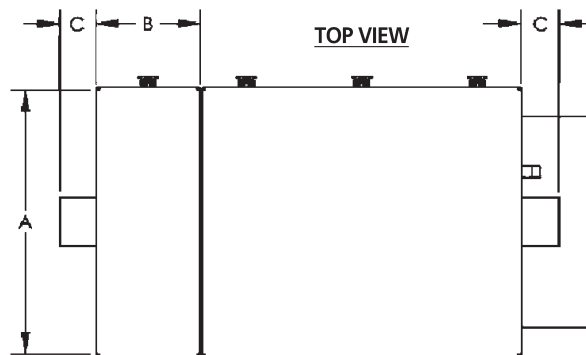
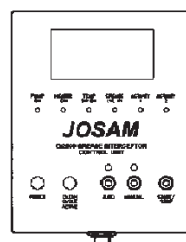
For use in restaurant and institutional kitchens and all types of food handling and processing areas where waste water contains, fats, oil and grease (FOG).

SPECIFICATION

JOSAM 60300A Series fully automatic Grease Recovery Device (GRD) is constructed of 304 grade stainless steel with supplemental solids interceptor, removable basket, stainless steel draw latches, non-adhesive "U" channel gasket, 55 gallon polypropylene reclaim tank with alarm and pump, may be floor mounted, partially recessed, or below grade in vaulted enclosure and is capable of measuring grease, heating congealed grease, and transferring grease via pump to a remote reclaim tank. The data is then sent to a Nema encased controller with an LCD display and LED indicators to provide current system status. The micro-processor records and displays clean cycles on a daily, weekly, monthly and yearly basis.

Available Options

- 23 Remote Monitoring Package
 - (-23 A) Monitoring Plan
 - (-23 B) Monitoring Plan
 - (-23 C) Monitoring Plan
- 24 Extended Warranty Package
- 33 55-Gallon Stainless Steel Reclaim Tank
- 34 55-Gallon Steel Reclaim Tank



TYPE NO.	FLOW RATE GPM	GREASE CAP. LBS.	PIPE SIZE	A	B	C	D	E	F	G	LBS.
60306A	25	50	3	24-3/8	9	3-1/2	16	35-1/2	25-5/8	11	220
60307A	35	70	3	24-3/8	9	3-1/2	20	40-5/8	31-1/2	15-1/2	340
60308A	50	100	3	25-7/8	9	3-1/2	22-1/2	42-3/8	33	17-1/2	425
60309A	75	150	4	25-7/8	9	3-1/2	26	56-1/8	46-3/4	21-1/2	700
60310A•	100	200	4	35	9	3-1/2	31	67-1/2	58	23	800
60311A•	150	300	4	39	9	3-1/2	35	73-3/4	64	27	1100
60312A•	200	400	6	43	9	3-1/2	41	80-3/4	71	31-1/2	1250
60313A•	250	500	6	47	9	3-1/2	44-3/4	85-3/4	76	35-1/2	1400
60314A•	350	700	6	47	9	3-1/2	48	105-1/2	96	39-1/2	1525
60315A**	500	1000	6	47	9	3-1/2	51	130-7/8	120	44	1650

- 55-GAL. RECLAIM TANK NOT SHOWN
- * RECOMMENDED CLEARANCES
- INCLUDES EXTERNAL MACERATING PUMP
- ** UTILIZES TWO PUMPS & RECLAIM TANKS

EGOLD-1000 SERIES ELECTRONIC GREASE/OIL LEVEL DETECTOR

APPLICATION

For use in restaurant and institutional kitchens and all types of food handling and processing areas where waste water contains fats, oil and grease (FOG). Additionally, can be used in service stations, parking garages, car and truck washes and industrial plants where discharge water contains oil. Can be used on most manufacturers' manual or semi-automatic grease and oil interceptors to monitor and alert facility personnel when interceptor cleaning is required.

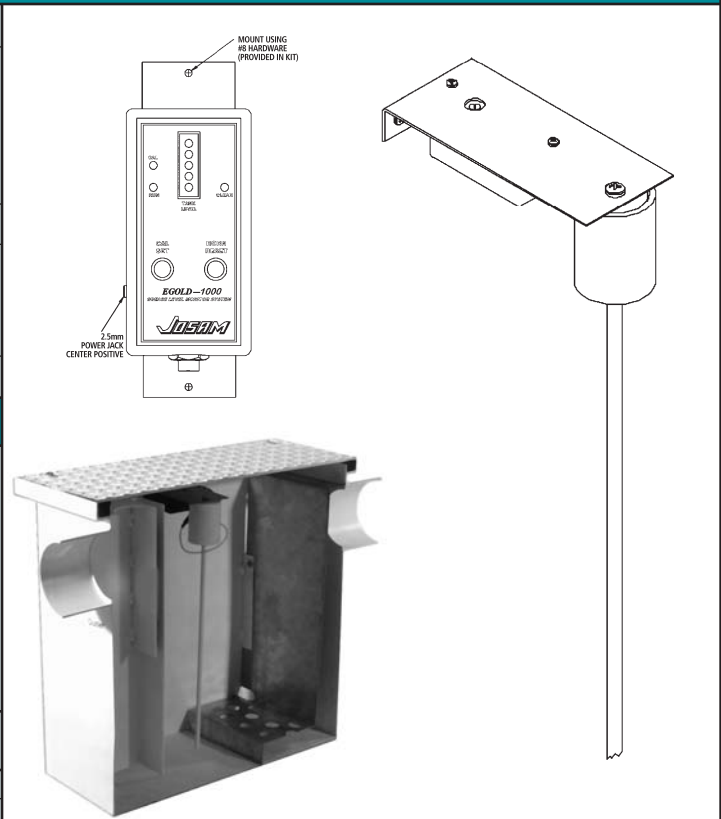
SPECIFICATION

JOSAM EGOLD-1000 Series Electronic Grease/Oil Level Detector with wall-mounted controller, is powered by a UL listed 9 VDC transformer and has L.E.D. indicators with audible alarm and permanent memory. The probe assembly is mounted to a bracket for precise placement ensuring accurate and reliable readings.

Available Options

- 23 Remote Monitoring Package
 - (-23 A) Monitoring Plan
 - (-23 B) Monitoring Plan
 - (-23 C) Monitoring Plan

DISTANCE FROM BOTTOM OF INTERCEPTOR TO TOP OF OUTLET	RECOMMENDED PROBE ASSEMBLY
12"-18"	MA62-10
19"-24"	MA62-12
25"-36"	MA62-16
37"-and up	MA62-21



CEGOLD-2000 SERIES PIT ELECTRONIC GREASE/OIL LEVEL DETECTOR

APPLICATION

For use in restaurant and institutional kitchens and all types of food handling and processing areas where waste water contains fats, oil and grease (FOG). Additionally, can be used in service stations, parking garages, car and truck washes and industrial plants where discharge water contains oil and is intended to be installed in outdoor pre-cast interceptors to monitor and alert facility personnel when interceptor pumping is required.

SPECIFICATION

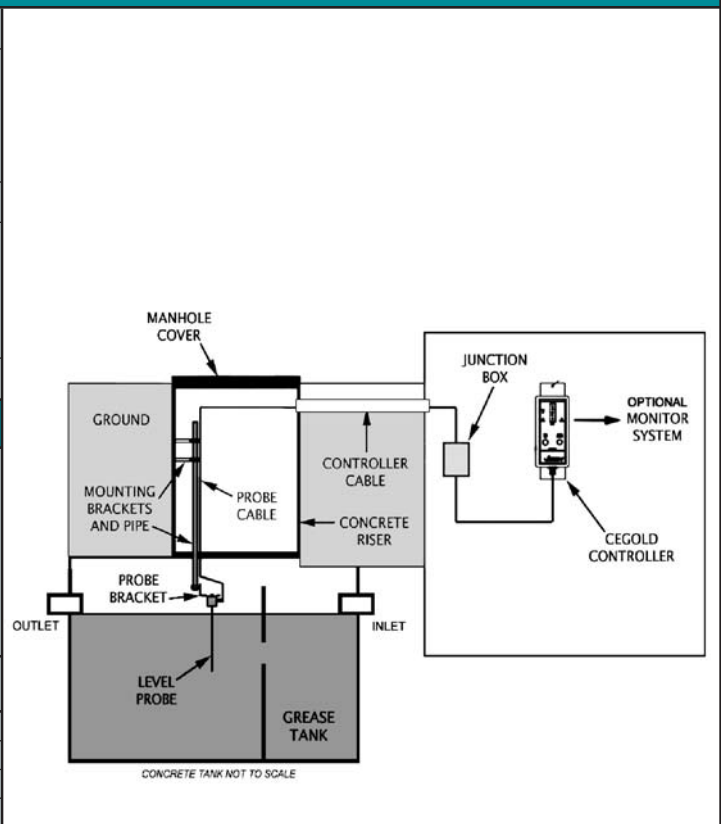
JOSAM CEGOLD-2000 Series Electronic Grease/Oil Level Detector with wall-mounted controller, is powered by a UL listed 9 VDC transformer and has L.E.D. indicators with audible alarm and permanent memory. The telescoping stainless steel probe assembly is mounted with brackets on side of interceptor to ensure ease of installation and removal for maintenance.

Available Options

- 23 Remote Monitoring Package
 - (-23 A) Monitoring Plan
 - (-23 B) Monitoring Plan
 - (-23 C) Monitoring Plan

DISTANCE FROM GRADE TO STATIC WATER LINE ■	RECOMMENDED PROBE ASSEMBLY
22"-48"	C037-04
49"-72"	C037-06
73"-96"	C037-08
97"-120"	C037-10

■ Longer lengths available on request. ■ When ordering specify distance from grade to static water line.



FLOW CONTROL FITTINGS

Essential to Achieving Maximum Efficiency

Flow control fittings are furnished at no extra cost with all JOSAM Interceptors and Separators. These devices govern flow rate to the interceptor or separator being used, thereby assuring the maximum retention of the material being intercepted.

One of the flow control fittings illustrated on this page will be shipped with every JOSAM Grease Interceptor or Oil Separator. They were designed after many years of tests and field experiments with interceptor installations under varying conditions and ensure 90% or more grease or oil retention efficiency of the interceptor.

When consideration isn't given to the flow rate of the waste water to be handled, generally the actual flow rate through the interceptor or separator exceeds its rated maximum. With such flow rate, the interceptor or separator would be overloaded. Retention time within the unit would not be sufficient for maximum separation. The result would be low efficiency and pollutants left in the waste water would pass through the interceptor or separator making the installation less than effective. When the flow is controlled by use of a JOSAM flow control fitting so that it can never exceed the maximum rating of the interceptor or separator, and the unit is cleaned on a regular basis, the maximum pollutant retention efficiency will be achieved and maintained.

All flow controls are provided with an air intake and should be connected to vent stack or vent not lower than the flow level of highest drain serviced or terminated in a return bend at the same elevation outside of building.

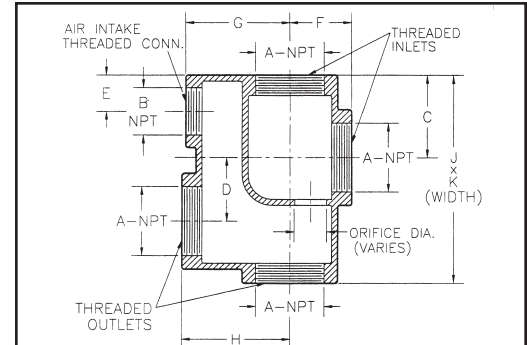
Interceptor/Separator–Flow Control

This table indicates which series flow control is furnished with the JOSAM interceptors or separators shown.

FLOW CONTROLS					
Series	Flow Control Series	Series	Flow Control Series	Series	Flow Control Series
60100-SA	60730	60110A	60730	60210A*	60710
60110-SA	60730	60100H-EXT	60740	60500B	60740
60100-SA-RT	60730	60100H-RT	60740	60500B-EXT	60740
60100-SA-ET	60730	60100H-ET	60740	60610-EXT*	60710
60100H	60740	60210A-EXT*	60710	60610A*	60710

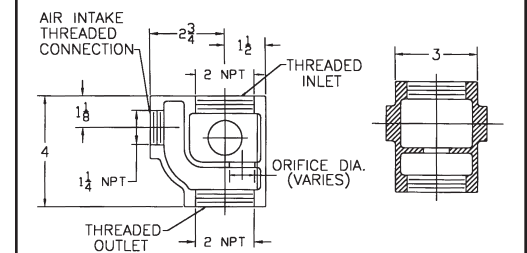
* All interceptors or separators in this series with a flow rate of 150 G.P.M. or less are shipped with a 60733 & 60734 Type Flow Control.

DIMENSIONS IN INCHES											
Type	A	B	C	D	E	F	G	H	J	K	LBS.
60712	2	1-1/4	2-1/2	2	1-1/8	2	3-1/4	3-3/8	6-1/2	3	7
60713	3	1-1/2	3	2-7/8	1-3/8	2-3/4	4-1/8	4-1/2	8-5/8	4-1/4	14
60714	4	2-1/2	3-3/4	4-1/8	1-7/8	4-1/4	6-1/2	6-7/8	12	6-7/8	52
60715	5	2-1/2	3-3/4	4-1/8	1-7/8	4-1/4	6-1/2	6-7/8	12	6-7/8	54
60716	6	3	4-3/8	5-1/8	2-1/8	4-3/4	7-7/8	8	14-1/4	8	85

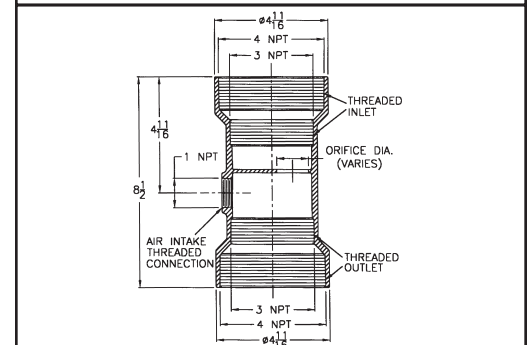


Two Bronze Plugs Furnished for unused Inlet & Outlet to serve as Cleanouts

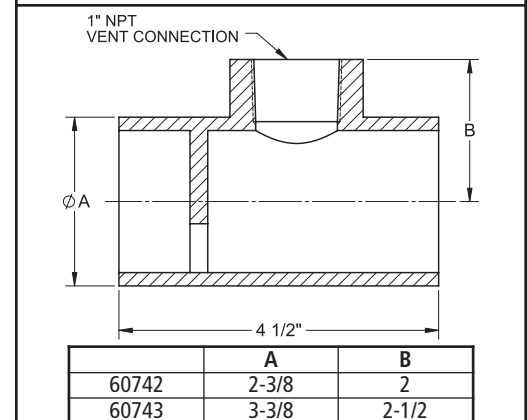
60710 TYPE



60732 TYPE



60733 & 60734 TYPE



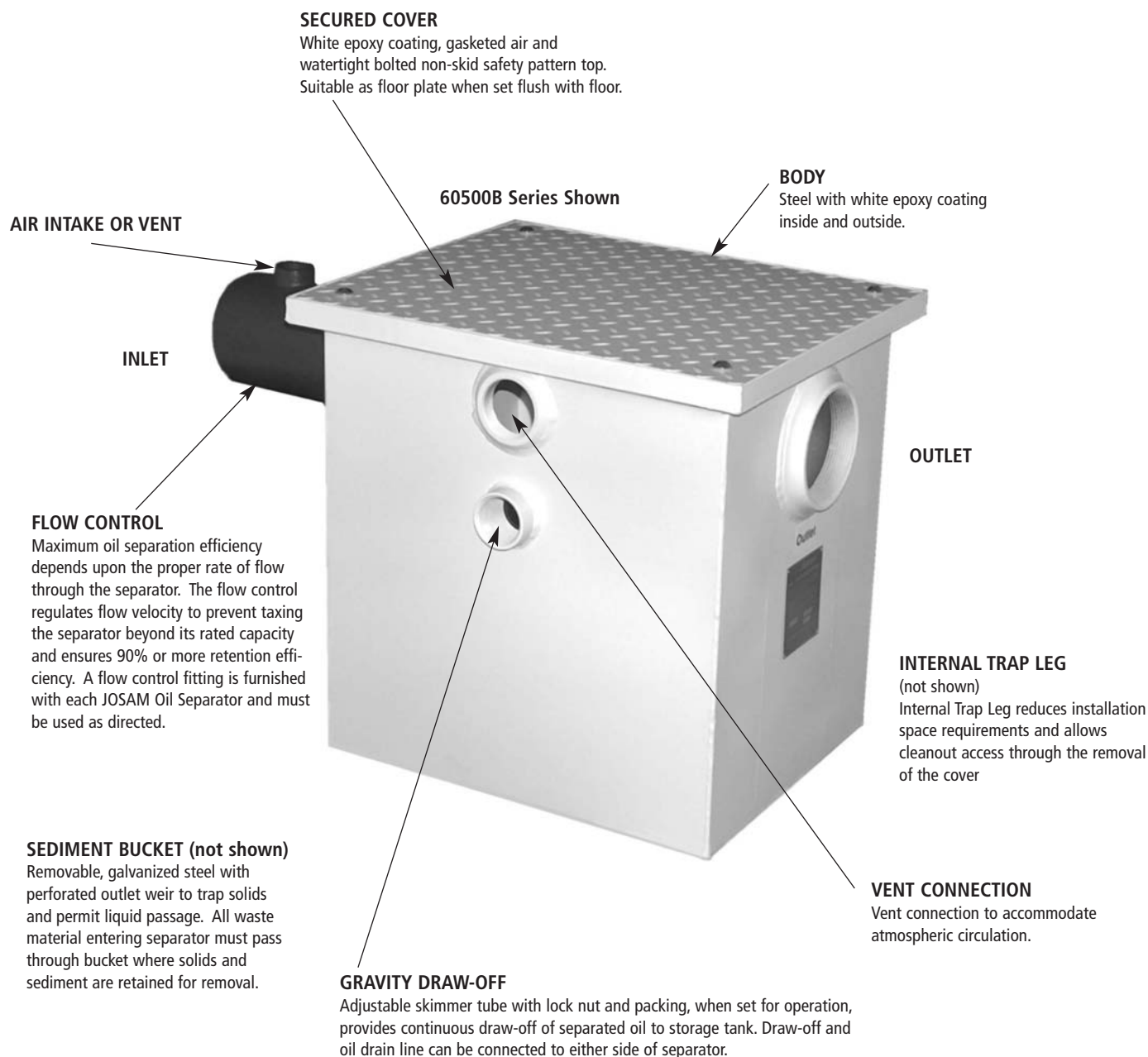
60742 & 60743 TYPE

OIL SEPARATORS

Features

AN IMPORTANT STEP IN PREVENTING POLLUTION FOR COMMERCIAL AND INDUSTRIAL SERVICE

JOSAM Oil Separators solve the majority of oil and hazardous waste interception and handling problems at the source. Years of research, experimentation and actual field experience have been applied by JOSAM to the design and development of the oil separators covered in this section. The paramount objective of an oil separator is to intercept and separate oils from wastewater, and after this has been accomplished, to provide an efficient means of directing the intercepted materials to storage and disposal facilities. JOSAM Oil Separators do just that with 90% plus retention efficiency. Features of the 60500B and 60610A Series are covered below. The same features with the addition of extended tops are available with the -EXT option.



JOSAM Oil Separators are produced in steel to rigid specifications with strict quality control.



OIL SEPARATORS

Sizing and Selection

SIZING PROCEDURE

The selection of an oil separator depends on the specific features desired and the size of separator required. The size of separator required is based on the peak waste water flow that can be discharged from the fixtures and equipment to be served.

The peak waste water flow to be handled by the proposed piping system must be estimated in gallons per minute (GPM). After the required flow has been determined, refer to the Oil Separator Selection Table and compare the required flow rate with the flow rates shown in the table.

EXAMPLE

The car wash piping system in a service station must handle an estimated peak flow of 20 GPM. The Oil Separator Selection Table shows that either the 60505B, the 60505B-EXT or the 60505-EST Separator, all rated at 20 GPM, can fulfill this requirement. It is only necessary to decide which of the three separators is best suited for the proposed installation.

Consider an example for a more extensive piping system: A processing operation has an estimated peak flow rate of 300 GPM. The Oil Separator Selection Table shows that the 60616A, the 60616A-EXT or the 60616-EST Separator, rated at 350 GPM, can handle the requirement. Sizing a horizontal waste line depends on the specific pipe material and the required pipe slope. The Horizontal Pipe Flow Table indicates the approximate GPM flow rates at various slopes that can be handled by cast iron or galvanized steel pipe.

OIL SEPARATOR SELECTION TABLE

Series	Flow Rate GPM	Inlet & Outlet Size (Inches)
60503B, 60503B-EXT, 60503-EST	10	2
60504B, 60504B-EXT, 60504-EST	15	2
60505B, 60505B-EXT, 60505-EST	20	3
60506B, 60506B-EXT, 60506-EST	25	3
60507B, 60507B-EXT, 60507-EST	35	3
60508B, 60508B-EXT, 60508-EST	50	3
60611A, 60611A-EXT, 60611-EST	75	3
60612A, 60612A-EXT, 60612-EST	100	4
60613A, 60613A-EXT, 60613-EST	150	4
60614A, 60614A-EXT, 60614-EST	200	5
60615A, 60615A-EXT, 60615-EST	250	5
60616A, 60616A-EXT, 60616-EST	350	6
60617A, 60617A-EXT, 60617-EST	500	6

INTERCEPTORS

NOTE: Larger capacity separators can be fabricated in accordance with specified requirements. Further information is available from your local JOSAM Representative.

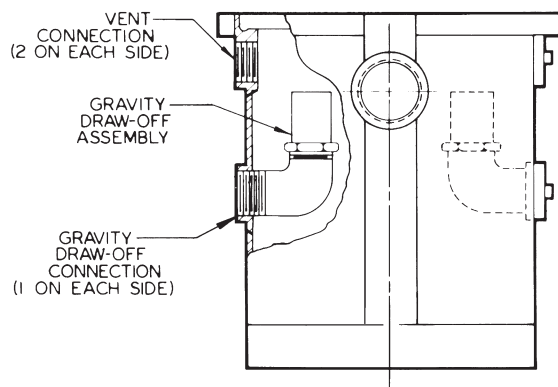
HORIZONTAL PIPE FLOW, GPM

Pipe Size (Inches)	Pipe Slope (Inches per Foot)		
	1/8	1/4	1/2
2	12	16	24
3	34	48	69
4	78	110	157
5	139	197	278
6	223	315	446

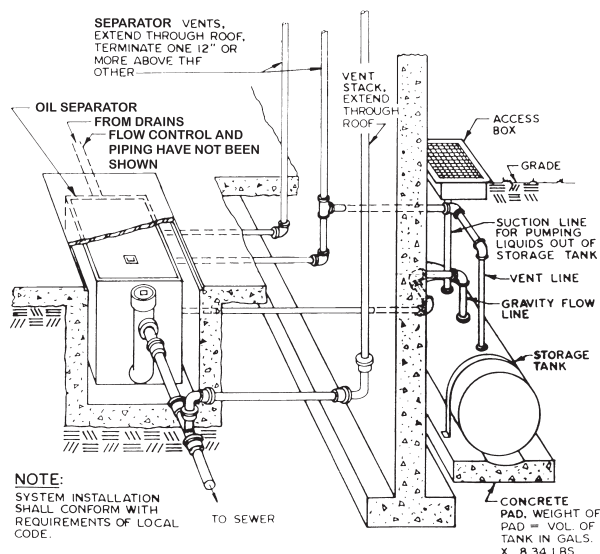
OIL SEPARATORS

Typical Installations

Installations and diagrams below show various components and suggested methods used when installing JOSAM Oil Separators. All installations are subject to government and local code requirements.



Gravity Draw-Off for Oil Separator



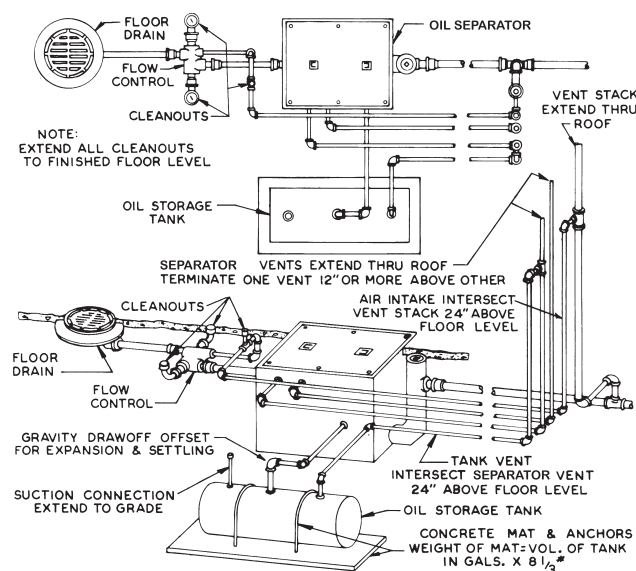
Typical arrangement of separator, draw-off piping, venting and oil storage facility.

GRAVITY DRAW-OFF

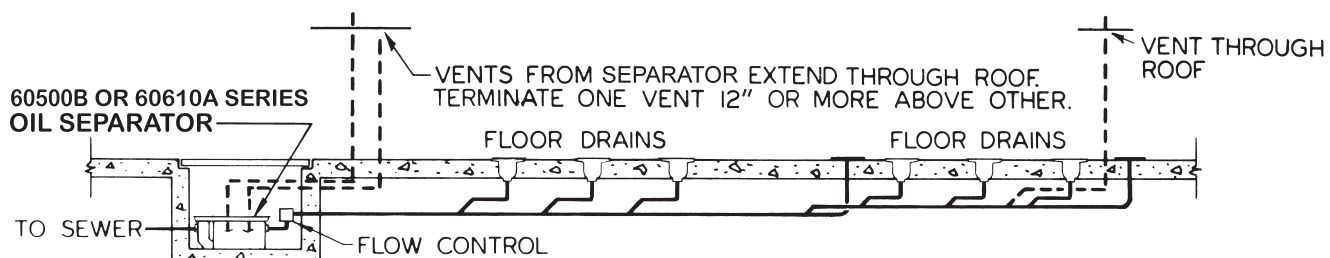
Every JOSAM Oil Separator is equipped with an internal gravity draw-off assembly having an adjustable skimmer tube and a threaded pipe connection through the side wall of separator body. This assembly can be mounted on either side to accommodate installation requirements. The piping to oil storage tank is connected to the draw-off. Typical installations are shown below.

SETTING THE GRAVITY DRAW-OFF TUBE

After separator is completely installed and ready for operation, run clean water through the unit at the anticipated operational flow rate and mark the operating water level. Set skimmer tube with top 1/8" above operating water level. During normal operation a film of oil will be on the water surface with all excess oil skimmed and drawn-off to a storage facility. When the tube is properly set water will not be drawn off with oil.



Oil separator recessed flush with floor, servicing a floor drain. Flow control is installed with cleanouts to facilitate servicing.



Oil separator and flow control installed in pit, servicing a battery of floor drains.

60500B SERIES

DRAW-OFF, GRAVITY TYPE

APPLICATION

For use in service stations, parking garages, car and truck washes and industrial plants where discharged water contains oil, sediment and other volatile liquids. Separator collects oil and conveniently permits the collected oil to be drained to a storage tank by means of an adjustable gravity draw-off connection. Sediment and debris are collected in a sediment bucket that can be periodically removed.

SPECIFICATION

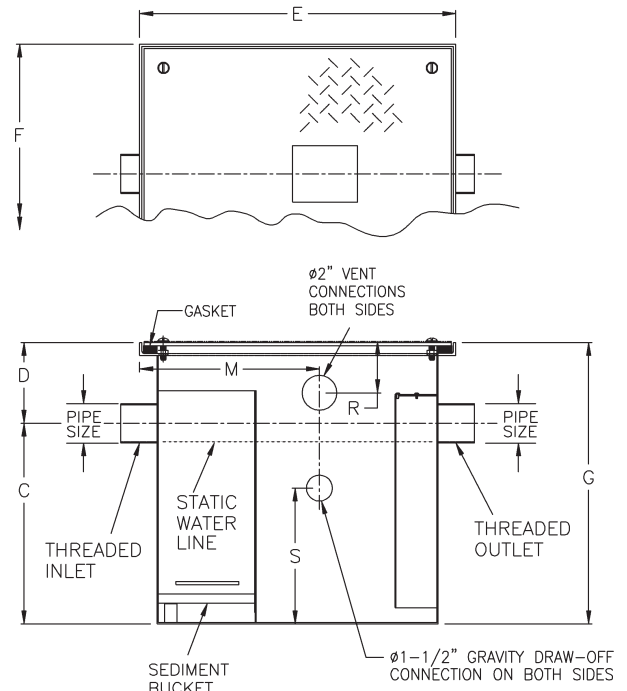
JOSAM 60500B Series fabricated steel Oil Separator, epoxy coated inside and outside, threaded connections, internal trap, sediment bucket, two vent connections on each side, gasketed non-skid cover and flow control fitting.

Available Options

- ▼ -EXT Extension, 6" Standard (Specify Extension Height)
- 60 Anchor Flange
- 61 Flange and Clamp Device
- HD Heavy-Duty Cover

- 3" sizes normally furnished with 4" x 3" reducing bushings.

TYPE NO.	FLOW RATE GPM	PIPE SIZE	ROUGH-IN CENTERS		LGTH. E	WIDTH F	HGT. G	VENT & DRAW OFF ROUGH-IN			LBS.
			C	D				M	R	S	
60503B	10	2	10-1/2	4-1/8	15-7/16	12-3/8	14-5/8	6-5/8	2-7/8	8-1/2	55
60504B	15	2	12-3/4	3-3/8	18-3/16	14-1/2	16-1/8	8	2-5/8	10-3/4	72
60505B	20	3•	14-5/8	4-3/8	19-15/16	16-3/8	19	8-7/8	2-3/4	12	85
60506B	25	3•	16	4	21-11/16	17-1/2	20	9-3/4	2-3/4	13-1/2	105
60507B	35	3•	16-3/4	4-7/8	25-5/16	19-1/4	21-5/8	11-9/16	2-3/4	14-1/4	130
60508B	50	3•	18-1/2	6-1/4	28-11/16	21-1/2	24-3/4	13-1/4	3	16	155



INTERCEPTORS

60500B-EXT SERIES

with Extension

APPLICATION

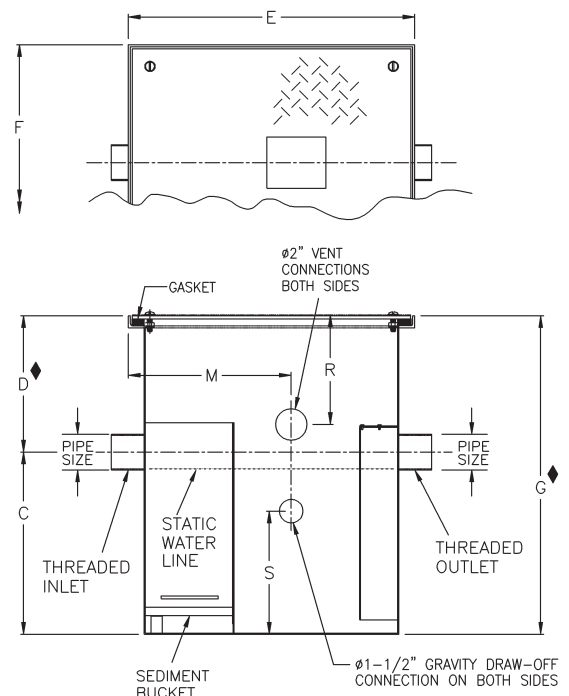
For use in service stations, parking garages, car and truck washes and industrial plants where discharged water contains oil, sediment and other volatile liquids. Separator collects oil and conveniently permits the collected oil to be drained to a storage tank by means of an adjustable gravity draw-off connection. Sediment and debris are collected in a sediment bucket that can be periodically removed. An extended top with fixed extension is supplied for installations requiring additional roughing depth from center of inlet and outlet to finished floor height.

SPECIFICATION

JOSAM 60500B-EXT Series fabricated steel Oil Separator, epoxy coated inside and outside, threaded connections, deep roughing, integral extension, internal trap, sediment bucket, two vent connections on each side, gasketed non-skid cover and flow control fitting.

- 3" sizes normally furnished with 4" x 3" reducing bushings.

TYPE NO.	FLOW RATE GPM	PIPE SIZE	ROUGH-IN CENTERS		LGTH. E	WIDTH F	HGT. G♦	VENT & DRAW OFF ROUGH-IN			LBS.
			C	D♦				M	R	S	
60503B-EXT	10	2	10-1/2	10-1/8	15-7/16	12-3/8	20-5/8	6-5/8	2-7/8	8-1/2	55
60504B-EXT	15	2	12-3/4	9-3/8	18-3/16	14-1/2	22-1/8	8	2-5/8	10-3/4	72
60505B-EXT	20	3•	14-5/8	10-3/8	19-15/16	16-3/8	25	8-7/8	2-3/4	12	85
60506B-EXT	25	3•	16	10	21-11/16	17-1/2	26	9-3/4	2-3/4	13-1/2	105
60507B-EXT	35	3•	16-3/4	10-7/8	25-5/16	19-1/4	27-5/8	11-9/16	2-3/4	14-1/4	130
60508B-EXT	50	3•	18-1/2	12-1/4	28-11/16	21-1/2	30-3/4	13-1/4	3	16	155



♦ DIMENSIONS BASED ON STD. 6" EXTENSION.

60500-EST SERIES

with External Storage Tank

APPLICATION

For use in service stations, parking garages, car and truck washes, industrial plants and elevator pits where discharged water contains oil, sediment and other volatile liquids. Separator collects oil and conveniently permits the collected oil to be drained directly to the integral storage tank by means of an adjustable gravity draw-off connection. Sediment and debris are collected in a sediment bucket that can be periodically removed.

SPECIFICATION

JOSAM 60500-EST Series fabricated Oil Separator, epoxy coated inside and outside, flush-with-floor type with oil storage tank, threaded connections, flat bottom, visible double-wall trap, sediment bucket, gasketed cover, check valve and flow control fitting.

Available Options

-EXT

Extension, 8" Standard, Specify Extension Height

-HD

Heavy-Duty Cover

-19

Reclaim Tank Alarm

-60

Anchor Flange

-61

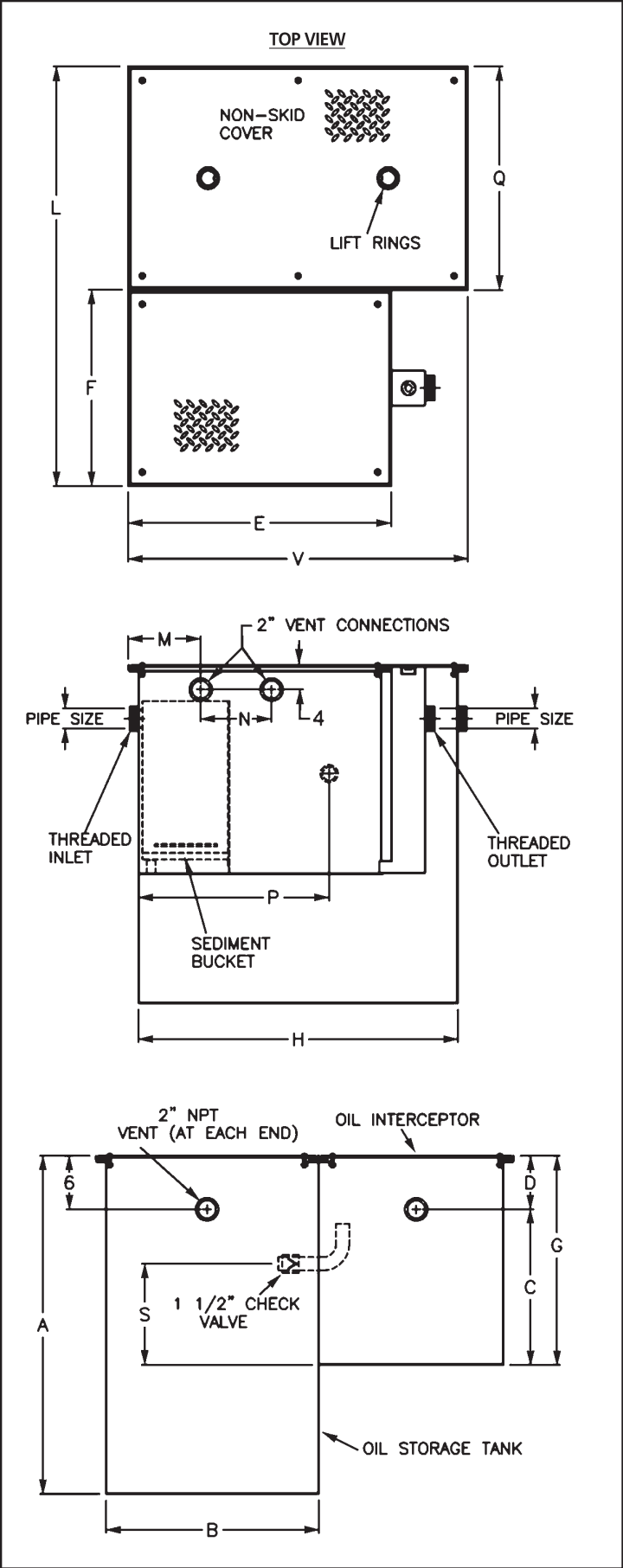
Flange and Clamp Device

•

3" sizes normally furnished with 4" x 3" reducing bushings.

TYPE	FLOW RATE	TANK (GAL.)	PIPE SIZE	A	B	C	D	E	F
60503-EST-50	10	50	2	33-1/2	20	9-3/8	4	19-3/8	12-1/4
60504-EST-50	15	50	2	33-1/2	20	11-1/2	4-5/8	22-1/8	14
60505-EST-50	20	50	3•	33-1/2	20	13	4-3/8	24-3/4	16
60506-EST-50	25	50	3•	33-1/2	20	14-1/2	4	26-3/8	17
60506-EST-100	25	100	3•	38	24	14-1/2	4	26-3/8	17
60507-EST-50	35	50	3•	33-1/2	20	15-1/2	4-7/8	30	19-3/4
60507-EST-100	35	100	3•	38	24	15-1/2	4-7/8	30	19-3/4
60508-EST-50	50	50	3•	33-1/2	20	17-1/2	6	33-3/8	22
60508-EST-100	50	100	3•	38	24	17-1/2	6	33-3/8	22

TYPE	G	H	L	M	N	P	Q	S	V
60503-EST-50	13-3/8	28	34-1/4	3-3/4	5	10	22	6	30
60504-EST-50	16-1/8	28	36	4-1/2	7-1/4	12-1/2	22	7-3/4	30
60505-EST-50	17-3/8	28	38	6-1/8	8	15-3/4	22	8-1/4	30
60506-EST-50	18-1/2	28	39	5-1/4	8	16-1/2	22	9-1/4	30
60506-EST-100	18-1/2	36	43	5-1/4	8	16-1/2	26	9-1/4	38
60507-EST-50	20-3/8	28	41-3/4	6-1/2	8	19	22	10	30
60507-EST-100	20-3/8	36	45-3/4	6-1/2	8	19	26	10	38
60508-EST-50	23-1/2	28	44	7	8	21-1/2	22	11-1/4	30
60508-EST-100	23-1/2	36	48	7	8	21-1/2	26	11-1/4	38



60610A SERIES

DRAW-OFF TYPE

APPLICATION

For use in large service stations, parking garages, car and truck washes and industrial plants where discharged water contains high volumes of waste laden with oil, sediment and other volatile liquids. Separator collects oil and conveniently permits the collected oil to be drained to a storage tank by means of an adjustable gravity draw-off connection. Sediment and debris are collected in a sediment bucket that can be periodically removed.

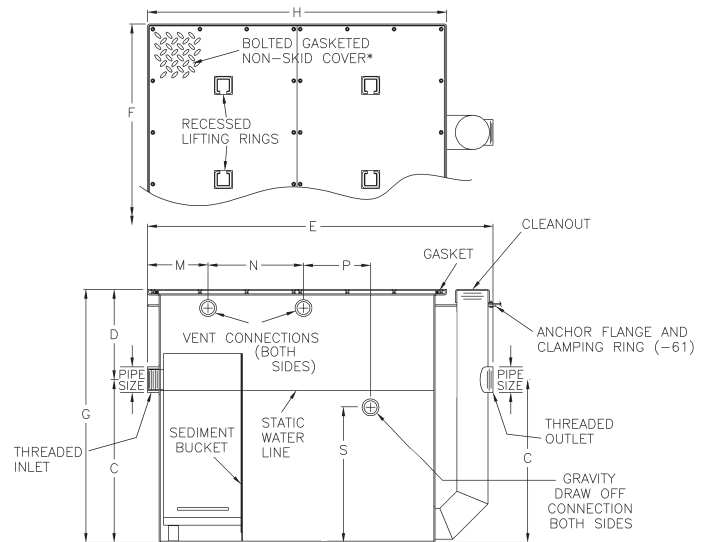
SPECIFICATION

JOSAM 60610A Series fabricated steel Oil Separator, epoxy coated inside and outside, high volume, threaded connections, visible double wall trap and sediment bucket, adjustable gravity draw-off either side, two vent connections on each side, gasketed non-skid cover and flow control fitting.

Available Options

- ▼ -EXT Extension, 6" Standard (Specify Extension Height)
- 60 Anchor Flange
- 61 Flange and Clamp Device
- HD Heavy-Duty Cover

TYPE NO.	FLOW RATE GPM	PIPE SIZE	ROUGH-IN CENTERS		LGTH. E	WIDTH F	HGT. G	COVER H	VENT & DRAW OFF ROUGH-IN				LBS.
			C	D					M	N	P	S	
60611A	75	3	21	6	46-1/4	31	27	41	8-1/4	12-1/2	10-1/4	13-1/2	450
60612A	100	4	23	8	54	35	31	47	9-1/2	14-1/2	12-1/2	15-1/4	575
60613A	150	4	27	8	60	39	35	53	10-1/2	16-1/2	14-1/2	19-1/4	750
60614A	200	5	31-1/2	10	67	42	41-1/2	58	11-1/2	18-1/8	16	26-1/4	1200
60615A	250	5	35-1/2	10	72	46	45-1/2	63	12-1/2	20-1/4	17-1/2	29-3/4	1475
60616A	350	6	39-1/2	12	80	52	51-1/2	71	13-1/2	23	19-3/4	34-1/4	1875
60617A	500	6	43-1/2	12	91	59	55-1/2	82	16	27	23	38-1/4	2575



* 60611A, 60612A & 60613A ARE FURNISHED WITH ONE-PIECE COVER.

60610A-EXT SERIES

with Extension

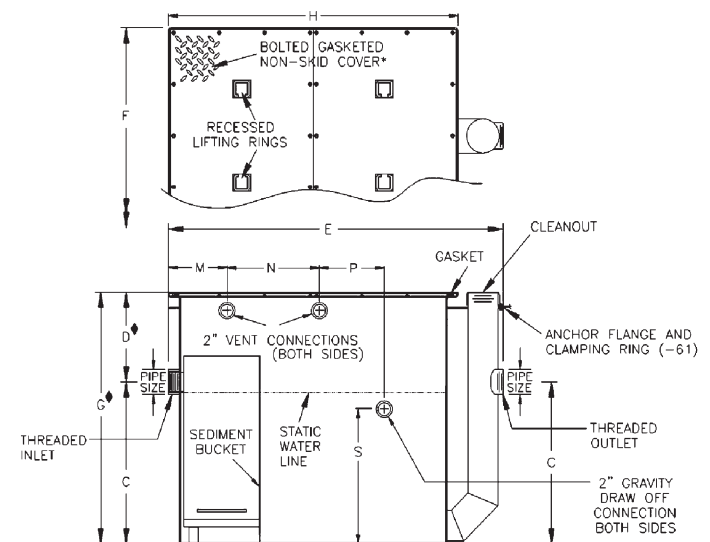
APPLICATION

For use in large service stations, parking garages, car and truck washes and industrial plants where discharged water contains high volumes of waste laden with oil, sediment and other volatile liquids. Separator collects oil and conveniently permits the collected oil to be drained to a storage tank by means of an adjustable gravity draw-off connection. Sediment and debris are collected in a sediment bucket that can be periodically removed. An extended top with fixed extension is supplied for installations requiring additional roughing depth from center of inlet and outlet to finished floor height.

SPECIFICATION

JOSAM 60610A-EXT Series fabricated steel Oil Separator, epoxy coated inside and outside, high volume, deep roughing, integral extension, threaded connections, visible double wall trap, sediment bucket, adjustable gravity draw-off either side, two vent connections on each side, gasketed non-skid cover and flow control fitting.

TYPE NO.	FLOW RATE GPM	PIPE SIZE	ROUGH-IN CENTERS		LGTH. E	WIDTH F	HGT. G	COVER H	VENT & DRAW OFF ROUGH-IN				LBS.
			C	D♦					M	N	P	S	
60611A-EXT	75	3	21	12	46-1/4	31	33	41	8-1/4	12-1/2	10-1/4	13-1/2	600
60612A-EXT	100	4	23	14	54	35	37	47	9-1/2	14-1/2	12-1/2	15-1/4	750
60613A-EXT	150	4	27	14	60	39	41	53	10-1/2	16-1/2	14-1/2	19-1/4	975
60614A-EXT	200	5	31-1/2	16	67	42	47-1/2	58	11-1/2	18-1/8	16	26-1/4	1200
60615A-EXT	250	5	35-1/2	16	72	46	51-1/2	63	12-1/2	20-1/4	17-1/2	29-3/4	1475
60616A-EXT	350	6	39-1/2	18	80	52	57-1/2	71	13-1/2	23	19-3/4	34-1/4	1875
60617A-EXT	500	6	43-1/2	18	91	59	61-1/2	82	16	27	23	38-1/4	2575



♦ DIMENSIONS BASED ON STD. 6" EXTENSION

* 60611A-EXT, 60612A-EXT & 60613A-EXT ARE FURNISHED WITH ONE-PIECE COVER.

60610-EST SERIES

with External Storage Tank

APPLICATION

For use in service stations, parking garages, car and truck washes, industrial plants and elevator pits where discharged water contains high volumes of waste laden with oil, sediment and other volatile liquids. Separator collects oil and conveniently permits the collected oil to be drained directly to the integral storage tank by means of an adjustable gravity draw-off connection. Sediment and debris are collected in a sediment bucket that can be periodically removed.

SPECIFICATION

JOSAM 60610-EST Series fabricated Oil Separator, epoxy coated inside and outside, flush-with-floor type with oil storage tank, threaded connections, flat bottom, visible double-wall trap, sediment bucket, gasketed cover, check valve and flow control fitting.

Available Options

-EXT

Extension, 8" Standard, Specify Extension Height

-HD

Heavy-Duty Cover

-19

Reclaim Tank Alarm

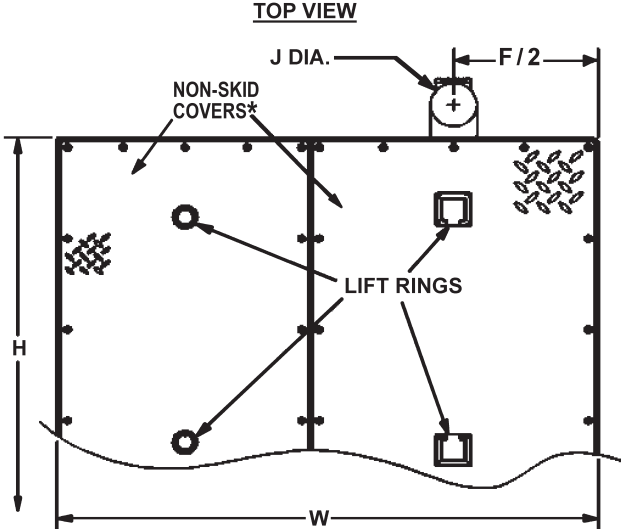
-60

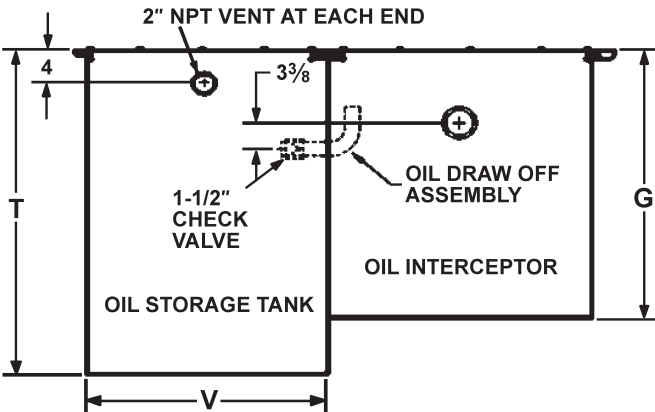
Anchor Flange

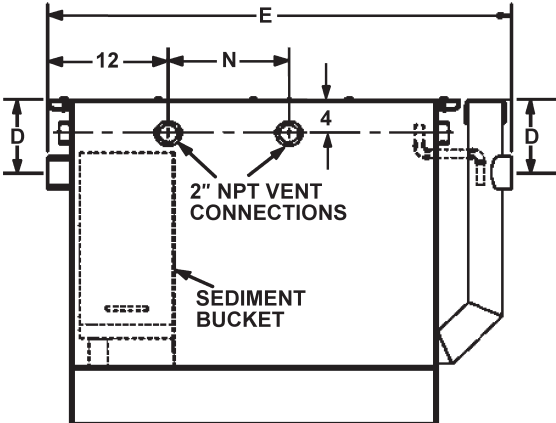
-61

Flange and Clamp Device

TOP VIEW







TYPE	FLOW RATE	TANK (GAL.)	PIPE SIZE	D	E	F	G	H	J	N	T	V	W	LBS.
60611-EST	75	100	3	8	46	31	29	41	4	12	37	24	59	1200
60612-EST	100	250	4	8	54	35	31	47	5	14	48	35	70	1500
60613-EST	150	250	4	10	60	39	37	53	5	16	45	35	74	2000
60614-EST	200	250	5	15	67	42	49	54	6	18	48	35	77	2400
60615-EST	250	500	5	15	72	46	51	63	6	20	60	45	91	3000
60616-EST	350	500	6	15	80	52	55	71	6	23	56	45	97	3800
60617-EST	500	500	6	26	91	59	70	83	6	27	66	45	104	5200

* 60611-EST, 61612-EST and 61613-EST FURNISHED WITH ONE-PIECE COVER.

INTERCEPTORS

60810 SERIES

OIL SEDIMENT INTERCEPTOR

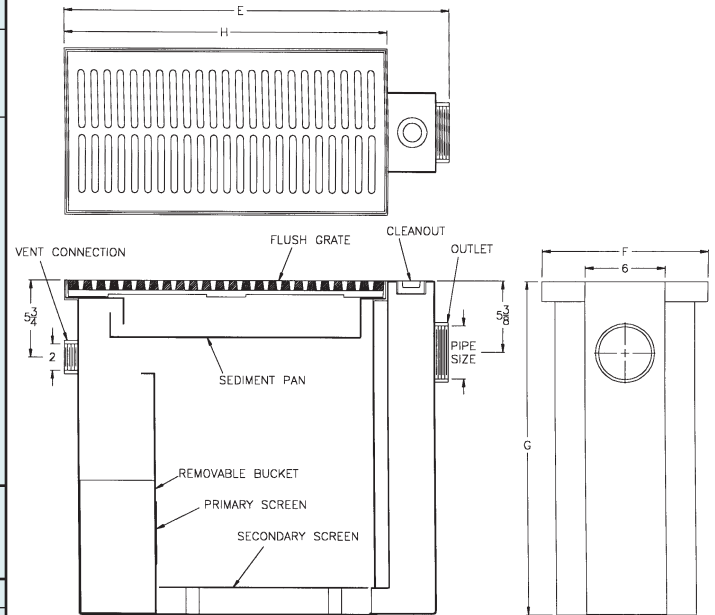
APPLICATION

For use in service stations, parking garages, car and truck washes and industrial plants where discharged water contains oil, sediment and other volatile liquids. Sediment and debris are collected in the sediment pan and removable bucket, which are accessible by removing the top grate. Oil and grease are trapped in the unit and may be skimmed off periodically.

SPECIFICATION

JOSAM 60810 Series steel Oil Sediment Interceptor with acid-resisting coating, threaded connection, flat bottom, visible double wall trap, removable sediment bucket, primary and secondary screens and medium-duty cast iron grate(s).

SLOT WIDTH 1/2"



TYPE NO.	PIPE SIZE	GRATE FREE AREA (SQ. IN.)	NO. OF GRATES	SLUDGE CAP (LBS.)	E	F	G	H	LBS.
60816	2	54	1	12	17-1/2	12-1/8	15	12-1/8	60
60817	4	112	1	60	29-7/8	12-1/2	25	24-1/2	175
60818	4	224	2	100	29-7/8	24-1/2	25	24-1/2	280
60819	4	336	3	200	41-7/8	24-1/2	35	36-1/2	360

61000 SERIES		BOTTOM ACCESS FIXTURE TRAP TYPE	
APPLICATION			
For use on the lavatory or sink in barber shops, beauty salons, dormitories and motels where hair, lint and other solids are commonly encountered. May also serve as a means of retrieving rings, other valuables or dental grindings, which have been dropped into the sink or lavatory. Cleaning is accomplished by removal of bottom cover and basket.			
SPECIFICATION			
JOSAM 61000 Series Nikaloy Solids Interceptor, bottom access, fixture trap type, slip joint inlet, 1-1/2" threaded side outlet, gasketed cover and removable perforated stainless steel basket.			
Available Options			
-1 Painted Cast Iron -3 Polished Bronze -30 Acid-Resisting C.I. Inside and Outside			
TYPE NO.	INLET A	OUTLET B	LBS.
61001-1/4	1-1/4	1-1/2	6
61001-1/2	1-1/2	1-1/2	6

61030 SERIES		TOP ACCESS FIXTURE TRAP TYPE	
APPLICATION			
For use as a means of collecting solids such as metal chips, plaster and grindings in dental offices, jewelry and optical shops or similar establishments where the unit can be mounted directly under the sink to recover precious metals as well as intercept harmful debris. Cleaning is accomplished by removal of top cover and basket.			
SPECIFICATION			
JOSAM 61030 Series coated cast iron Solids Interceptor, top access, fixture trap type, threaded connections, gasketed cover, removable galvanized steel basket and stainless steel screen.			
Available Options			
-26 Cast Aluminum -30 Acid-Resisting Inside and Outside			
TYPE NO.	PIPE SIZE	LBS.	
61031-1/2	1-1/2	9	
61032	2	9	

NOTE: 6" MIN. CLEARANCE REQUIRED BELOW COVER FOR REMOVAL OF BASKET.

NOTE: A MINIMUM OF 5" IS REQUIRED ON EITHER SIDE OF PIPE CENTER LINE FOR HINGE BOLT CLEARANCE.

□ MIN. HEIGHT REQUIRED FOR REMOVAL OF BUCKET AND SCREEN.

61040A SERIES

TOP ACCESS ON-FLOOR TRAP TYPE

APPLICATION

For use as a means of collecting large amounts of solids such as metal chips, plaster and grindings in dental offices, hospitals and optical shops or similar establishments where the unit can be mounted on the floor under the sink to recover precious metals as well as intercept harmful debris. Cleaning is accomplished by removal of top cover and basket.

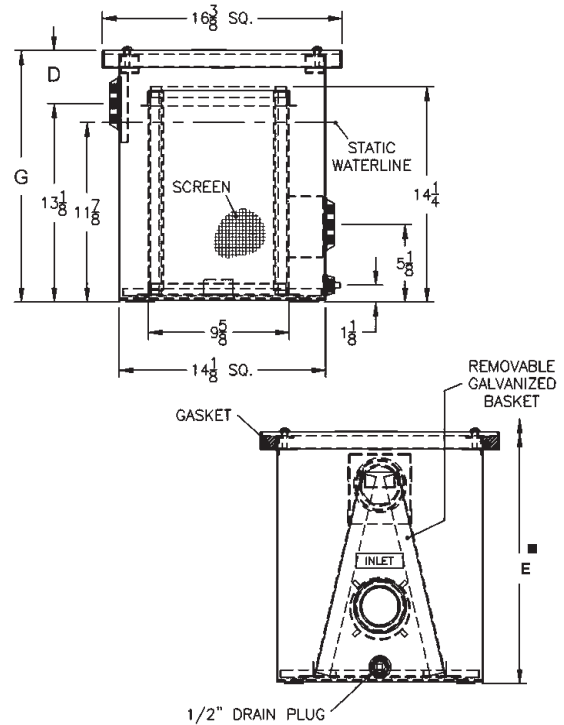
SPECIFICATION

JOSAM 61040A Series steel Solids Interceptor with acid-resisting coating, top access, on-floor trap type, with 2" threaded connections, side outlet, gasketed non-skid cover, removable galvanized steel basket and stainless steel screens.

Available Options

- EXT Extension, 6" Standard (Specify Extension Height)
- 16 Monel Screens

TYPE NO.	PIPE SIZE	D	E	G	LBS.
61042A	2	3 1/2	31	16 5/8	54
61043A	3	4 1/2	32	17 5/8	60
61044A	4	5 1/2	33	18 5/8	55



- MIN. HGT. REQUIRED FOR REMOVAL OF SOLIDS BASKET.
- ADD EXT. HGT. TO MIN. HGT. REQUIRED IF FURNISHED WITH EXT.

61070 SERIES

TOP ACCESS IN-LINE TYPE

APPLICATION

For use as a means of collecting solid waste materials, hair, lint and foreign particles ahead of swimming pool filters and processing devices or commercial laundry equipment. Cleaning is accomplished in minimal time by removal of top cover secured with swing bolts and basket.

SPECIFICATION

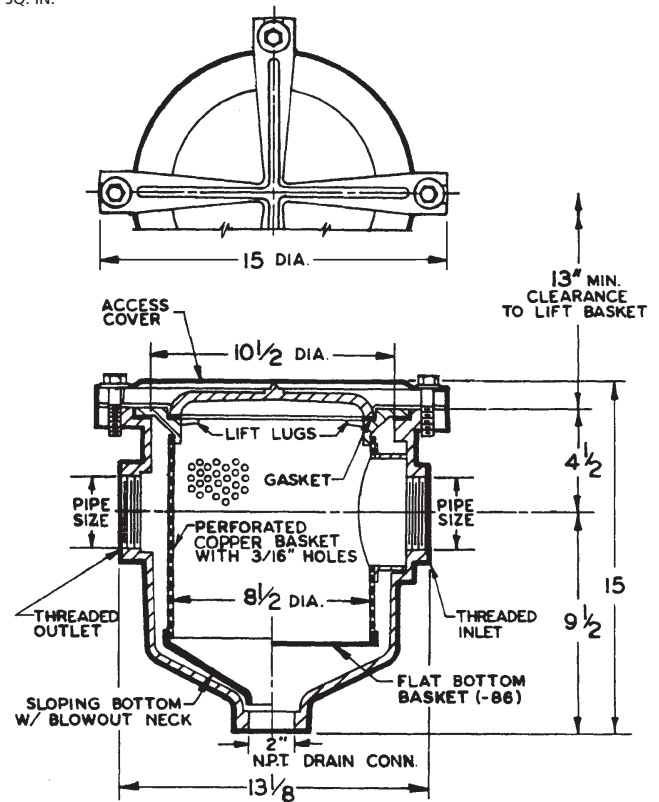
JOSAM 61070 Series cast iron Solids Interceptor with acid-resisting coating, top access, in-line type, threaded connections, 2" threaded drain or blow-off connection, removable perforated copper basket with conical solid bottom, gasketed cast iron support rim and gasketed cover seated on basket support rim secured with hex head bolts.

Available Options

- 4 Galvanized Cast Iron Parts
- 15 Stainless Steel Basket
- 86 Flat Bottom Basket

TYPE NO.	PIPE SIZE	LBS.
61072	2	65
61073	3	65
61074	4	65

BASKET FREE AREA
85.0 SQ. IN.



61080 SERIES

TOP ACCESS IN-LINE TYPE

APPLICATION

For use as a means of collecting very large quantities of solid waste materials, hair, lint and foreign particles ahead of swimming pool filters and processing devices or commercial laundry equipment. Cleaning is accomplished in minimal time by removal of top cover secured with gasketed compression yoke and basket.

SPECIFICATION

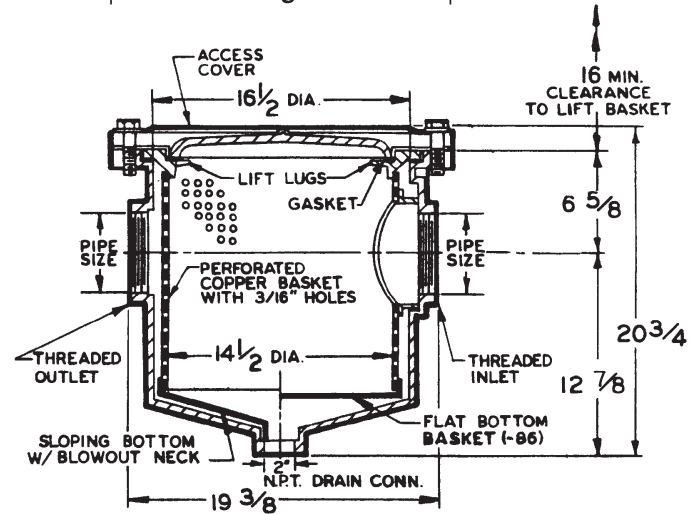
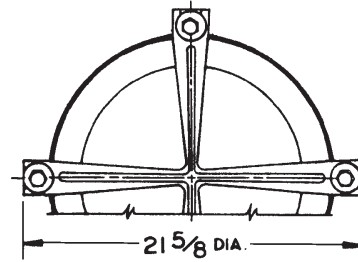
JOSAM 61080 Series cast iron Solids Interceptor with acid-resisting coating, top access, in-line type, threaded connections, 2" threaded drain or blow-off connection, removable perforated copper basket with conical solid bottom, gasketed cast iron support rim and gasketed cover seated on basket. Support rim secured with hex head bolts.

Available Options

- 4 Galvanized Cast Iron Parts
- 15 Stainless Steel Basket
- 86 Flat Bottom Basket

TYPE NO.	PIPE SIZE	LBS.
61084	4	202
61085	5	202
61086	6	212

BASKET FREE AREA
250 SQ. IN.



61800 SERIES

LINT INTERCEPTOR

APPLICATION

For use as a means of collecting very large quantities of solid waste materials, hair, lint and foreign particles ahead of swimming pool filters and processing devices or commercial laundry equipment. Cleaning is accomplished through removal of non-skid cover and basket.

SPECIFICATION

JOSAM 61800 Series Lint Interceptor with acid-resisting coating, non-skid cover, galvanized steel bucket with stainless steel screens and threaded connections.

Available Options

- EXT Extension, 6" Standard (Specify Extension Height)

TYPE NO.	FLOW RATE GPM	MAX. NO. OF WASHERS	PIPE SIZE	C	D	E	F	G	LBS.
61805	70	7	3	12	6	20	17	18	90
61806	200	20	4	14	6	22	18	20	120
61807	300	30	6	16	6	25	20	22	190
61808	400	40	6	18	6	29	22	24	220

