

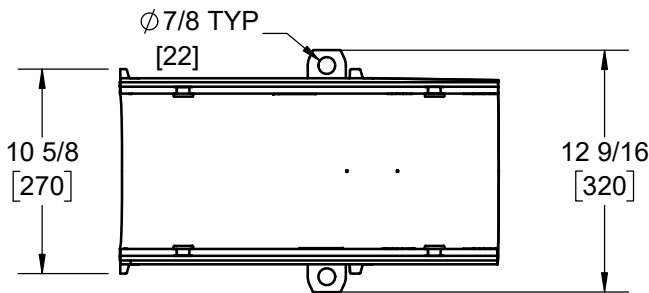
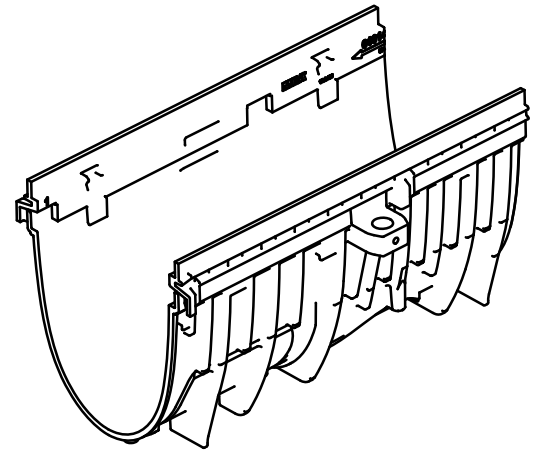
SPECIFICATION:

JOSAM 200C SERIES HALF METER CHANNELS SHALL BE 19.7" (500) LONG WITH 8" (203) INTERNAL WIDTH WITH RADIUSED BOTTOM. INTERCONNECTING CHANNEL SECTIONS SHALL BE MADE OF SMC/GRP (SHEET MOLDING COMPOUND/GLASS REINFORCED POLYESTER) MATERIAL AND AVAILABLE WITH AND WITHOUT SLOPE. CHANNEL SUPPORT BRACKETS CAPABLE OF ACCEPTING REBAR, END OUTLETS, BOTTOM OUTLETS, ENDCAPS, AND CORNER/T CONNECTORS SHALL BE AVAILABLE. GRATE OPTIONS FOR LOADING CLASSES A-E WITH PRESSURE OR LOCKING BOLT SECURING DEVICES AND DUCTILE IRON RAIL TO PROTECT CHANNEL EDGES SHALL BE AVAILABLE.

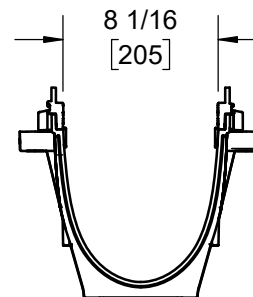
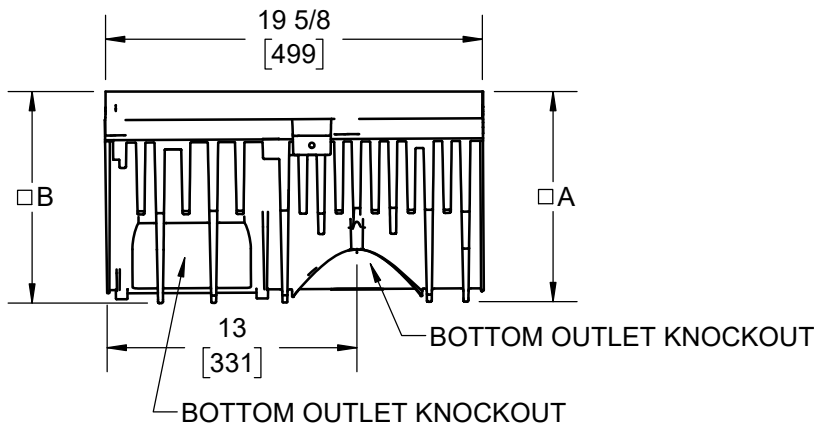
**PRO-PLUS
8" INTERNAL WIDTH**

SERIES 200CXX-12

| PART NUMBER | DIM. "A" | DIM. "B" | WEIGHT (LBS) |
|-------------|----------|----------|--------------|
| 200C-12 | 9.5 | 9.5 | 6.6 |
| 200C01-12 | 10.9 | 11.0 | 8.5 |
| 200C02-12 | 11.1 | 11.2 | 8.7 |
| 200C03-12 | 11.3 | 11.4 | 8.8 |
| 200C04-12 | 11.5 | 11.6 | 9.0 |
| 200C05-12 | 11.7 | 11.8 | 9.1 |
| 200C05N-12 | 11.8 | 11.8 | 9.1 |
| 200C06-12 | 11.9 | 12.0 | 9.2 |
| 200C07-12 | 12.1 | 12.2 | 9.4 |
| 200C08-12 | 12.3 | 12.4 | 9.5 |
| 200C09-12 | 12.5 | 12.6 | 9.6 |
| 200C10-12 | 12.7 | 12.8 | 9.7 |
| 200C11-12 | 12.9 | 13.0 | 10.9 |
| 200C12-12 | 13.1 | 13.2 | 11.0 |
| 200C13-12 | 13.3 | 13.4 | 11.2 |
| 200C14-12 | 13.5 | 13.6 | 11.3 |
| 200C15-12 | 13.7 | 13.8 | 11.4 |
| 200C15N-12 | 13.8 | 13.8 | 11.5 |
| 200C16-12 | 13.9 | 14.0 | 11.6 |
| 200C17-12 | 14.1 | 14.2 | 11.7 |
| 200C18-12 | 14.3 | 14.4 | 11.8 |
| 200C19-12 | 14.5 | 14.6 | 11.9 |
| 200C20-12 | 14.7 | 14.8 | 12.0 |



□ NOTE: ADD 1.2" WHEN FURNISHED WITH DI FRAME 152442



U.S. Patent No. 7,736,092

WARNING: Cancer and Reproductive Harm - www.P65Warnings.ca.gov

DATE OF LAST CHANGE: 9/03/19

DIMENSIONS ARE SUBJECT TO MANUFACTURERS TOLERANCES AND CHANGE WITHOUT NOTICE. WE CAN ASSUME NO RESPONSIBILITY FOR USE OF SUPERSEDED OR VOID DATA.

JOSAM
MICHIGAN CITY, INDIANA

NOTES